

PARISH NEWS

covering
SHILLINGTON, PEGSDON & HIGHAM GOBION



Harvesting as it used to be...

Kitchener Family - Moorhen Farm circa 1986.

*Harold driving the tractor - Nuffield DM4
with David 'Kitch' sitting on land driven binder
(awkward on corners apparently!)*

Issue 173 – AUGUST 2024

Deadline for October edition - Friday, 28th September 2024

PARISH COUNCIL

The Council's contract for maintenance of road verges within the 30mph limit is coming up for renewal in 2025. Members of the Environment Committee - Councillors McCormick, Palmer, Petrie and Turner, accompanied by the Clerk, walked around the village on two evenings in June. They identified areas in Hanscombe End Rd opposite the Old Swan and in Hillfoot Rd across from nos. 22 - 60 ("White City") that are mowed frequently during the summer months at present but could be less intensively managed in future.

Leaving the grass to grow during the summer would allow wildflowers to bloom and more could be planted to improve biodiversity. These areas would then be cut just once a year in the autumn with the cuttings removed from the site. In addition, areas where grass grows slowly under the trees on the triangle at Marquis Hill and at the village green could be left unmowed as could the wide verge in High Road, southwest of the Twitchell entrance and past the entrance to Parsonage Farm. All these areas would need monitoring closely in case less desirable species like nettles or thistles tried to take over and needed controlling. Regular mowing would continue along a strip bordering most roads and pavements to ensure that vegetation does not inconvenience walkers or road users and to keep the areas looking tidy. On remaining roads, the current regime would remain unchanged with flailing of the grass verge twice yearly in June and in the autumn when hedges would also be done.

The committee is keen to see more trees planted but noted that the presence of pipes, cables and powerlines and access for the Drainage Board would rule out some areas. If you'd like to see how these proposals would affect your stretch of road, please email Councillor Derek Turner at derek.turner@phonecoop.coop. The suggestions will be discussed by the whole Parish Council at the next meeting on 3rd September.

The Council was concerned that rubbish is often being left around the bottle, shoe and clothes banks in the car park at the top of Greenfields. Leaving other items there amounts to fly-tipping and removing it puts unnecessary extra costs onto council tax payers. If in doubt about how to dispose of unwanted items, take a look at :

https://www.centralbedfordshire.gov.uk/info/2/waste_and_recycling.

The Council has objected to a planning application for building nine 4 and 5 bedroom homes on land in High Rd adjacent to Dawes Garage. The area had been included in the Local Plan on the basis that 15 to 20 homes would be built there, which would have led to some provision of affordable housing. The applicant claims that they have "... addressed concerns that the extant permission is undeliverable due to BNG contribution, affordable housing, s106 and s278 contributions" and that "a reduction in unit numbers allows for timely delivery of the additional housing within the next 5 years". The Parish Council opposed the application as it contains no provision for affordable housing and differs from the proposal that led to inclusion of the site in the Local Plan.

In other news, every year, an auditor has to scrutinise the accounts of the Parish Council to ensure that every penny of income and expenditure is accounted for and recorded properly. We are pleased to report that last year's are all in order. The Councillors heard that box blight is affecting the hedge at the War Memorial and would contact the site managers about using an environmentally-friendly treatment. We are waiting to receive more information recorded by police traffic management boxes that were deployed in Hanscombe End and Pegsdon recently to monitor traffic speed. The data is expected to support our case for introducing more traffic-calming measures.

For all Parish Council issues please contact:

Miss Lauren Darnell, Clerk to the Parish Council

45 Tiger Moth Way, Lower Stondon, Hitchin, Herts. SG16 6GN. ☎ 01462-713224

email: clerk@shillington-pc.gov.uk <https://shillington-pc.gov.uk>

ANNOUNCEMENTS / ITEMS / NEWS IN BRIEF

CHURCH HILL ALLOTMENTS

The Annual Rents are due at the end of September for the Allotments at Church Hill. Please advise us if you wish to terminate an agreement or wish to take on a new Allotment.



Hayley ☎ 07802-359495 or Jackie ☎ 01462-711209



DIARY DATE: Don't forget.... the Annual Fireworks Spectacular – Saturday 2nd November at the Playing Fields

Thank you to everyone who supported the D-Day remembrance.
The total collection was £213.95p.

Shirley McGrath, Local RBL organiser EAB29



We were sorry to hear of the passing of
Mrs. Ruth Pauline Jackson,
formerly of Church Street, on the 18th June.
Our condolences to her family.

Breast Cancer

Fundraising Coffee Afternoon - 18th July

A wonderful effort by a great team, organised by Mrs. Sandra Hare in her garden. An amazing £810 was raised on the day with more donations continuing to trickle in. Thank you to all for your kind support ☺.



SHILLINGTON CARE

Do you need help with transport from Shillington?
We can get you to the surgery, hospital and collect your prescriptions.

Shillington Care is an informal group of people able to give help. Give us a call and we will arrange for someone to pick you up and bring you back. Initially, speak to **Liz** on **01462-711594** or leave a message. If there is a delay on this number then call **07930-812940**



Happy 40th Birthday - **Joe McGrath**
from ALL at The Social Club



ALL SAINTS' CHURCH SHILLINGTON & GRAVENHURST

www.allsaintsshillington.org.uk



WHAT'S GOING ON

We are very pleased to inform you that Rev. Jenna Dearden is now our new Priest in Charge. A Licencing Service for Rev. Jenna was conducted by Richard, Bishop of Bedford took place on the 25th July at All Saints Church, Shillington. Rev. Jenna is taking over four parishes which are Gravenhurst & Shillington, Stondon, Arlesey and Astwick. In this interim period, while Rev. Jenna is settling in, any enquiries regarding All Saints, please continue to contact the Church Wardens:

Liz & Dick Brewer ☎ 01462 711594.
(Mobiles: Liz – 07930-812940 or Dick – 07785-638856)

Sunday services are held at 9.30am and for August and September are listed in the Village Calendar on the back cover. Choral Evensong on 1st September will be at the Historic Church of St. Mary's in Lower Gravenhurst at 6pm.

FUNERALS/BURIALS:



- 28th May - Shirley Davies
Service in Church followed by Cremation at North Herts Crematorium.
- 6th June – Sue Catton
Service in Church followed by burial in Churchyard.

BAPTISMS:



- 21st July - Baby Wilfred Olding.

200 CLUB – LUCKY WINNERS: (prizes 1st £50, 2nd £25, 3rd £10)

June:

1st no. 119 - Trevor Knight ★ 2nd no.045 - Christine Knight ★ 3rd no. 007-- Rosalind Howorth

July:

1st no. 109 – Maggie Theaker ★ 2nd no.193 – Joyce Johnson ★ 3rd no.015 – Ewan Bishop

Sunday Teas in the Church each Sunday 3pm to 5pm, to the end of September. Musical entertainment will take place on some Sundays, look out for Friends of All Saints notices.

An 'Alpha course' is being arrange by Ruth Grey, Lay Minister of Stondon Church, to commence in September. Please contact Liz Brewer for details.

For the Autum we are planning a Harvest Lunch and a Bingo evening, dates to be confirmed.

Best Wishes, Liz Brewer (Church Warden) - lizbrewer313@gmail.com

SHILLINGTON IN BLOOM

WASP (Wild About Shillington Parish) is a group of people keen to enhance the biodiversity of Shillington village, share photos of the fabulous wildlife we have here and to improve our village environmental engagement.

We have been active for around six months now and have over sixty members. There are some great posts and photos to view and regular alerts for things that we can look out for in the wonderful environment around us. But **WASP** is entering a new phase and we want everyone in the village involved. Shillington is lucky in that there are loads of groups active in the village and we thought it would be great to pull everyone together in a way that is fun, doesn't involve too much effort and can include young and old, and more specifically those who are less comfortable in the digital world.



Therefore, we are inviting everyone in the village, as well as the school and local businesses alike, to help with an entry to **Anglia In Bloom** competition for 2025. We visited Woburn village and talked to the organiser of Woburn's winning entry in 2023 who kindly guided us through the process. In short we'd need a steering group of around 10 people, ideally some volunteers for 'the Ends' or the longer roads and people with gardening/up-cycling skills or just enthusiasm. The **Anglia in Bloom** competition is all about community engagement and reaching out to all.

Although we don't yet have a Committee we would be launching from a very strong position. Shillington has lots of front gardens already full of flowers...we just need to fill some gaps – and have fun doing it! Check out this page for details: <https://www.angliainbloom.co.uk/how-to-get-involved>.

In the meantime find **WASP** on Facebook:

<https://www.facebook.com/groups/wasp.shillington>



We'll post some photos of Woburn's entry on the village and **WASP** pages to provide inspiration and if anyone would rather email or call **WASP** directly - they can use this address: wasp.shillington@gmail.com or call Erika ☎️ **07981-015049**.



Did we blink and miss summer – it certainly feels like it as to date, we have only had a handful of sunny days. Hopefully, August will make up for it!

On the 30th May, some of our members spent an enjoyable afternoon at Woburn. We had a guided tour of St Mary's Church and then wandered around the beautiful village. The rhododendrons in the park were stunning.



At the June meeting, members of St John's Ambulance gave us a First Aid training session. It was not only a fun-filled evening, it was so informative and we learnt a lot. We all feel as if we can now deal more confidently with a medical emergency.



At the end of the month, fourteen of us had a lovely time at Wassledine wood listening to a story, making willow stars, eating delicious homemade Victoria sponge and drinking tea, all next to a campfire. It was a magical evening, if a little chilly.

Shillingfest was a great success. The weather was kind (it was warm!) with lots of lovely sunshine. The WI cake stall was very popular. It's funny – last year we sold out of scones and were left with fruit cake, this year it was the other way round!

In July we attended an American Picnic at College Farm (thank you, Jeff). Again, we were lucky with the weather – the sun shone but it was a bit nippy. The food was brilliant and, as a bonus, there was a beautiful sunset.



After our August break, we return on the 4th September for what promises to be an interesting meeting. Our speaker will be Alex Prior, an author and "a Collector of the Eclectic".

Our meetings take place on the first Thursday of the month in the Congregational Church at 7.30 p.m. Visitors are very welcome (£4).

For further information please contact:

Julia Bruce, President ☎ **01462 712412** or
Liza Starling, Secretary - lstarling@outlook.com

THERE'S CHANGE AND THERE'S CHANGE....

By Annie Palmer (WI Ambassador for Climate Change) anniejpalmer@hotmail.com

Regular readers of this column can probably guess what I'm going to write about in this issue of Parish News. If you're thinking that I'm going to mention Labour's 'Build, Build, Build' plans (same policy, different colour), you know me so well and have got it in one!

I had no idea which party to vote for on July 4th, even when I walked into the polling booth. For the sake of our health and wellbeing, and our children's existence, we need a healthy natural world and both main party's plans and policies of economic growth at all costs (both past and present) are destroying it. Neither of them has listened to the science; they are listening to those with too much power, money and influence whose names are not on any general election ballot papers.



Labour's election communications told us that after "14 years of Tory Chaos", we need "change". OK but, and I'm thinking about nature here, what we don't need is change that makes an awful situation which is still reversible into one that is not reversible – a change from hope to no hope. We've had 14 years of Tory destruction of nature but it was preceded by 13 years of Labour doing the same thing. Both parties are actually as bad as each other.



We need to change from destroying nature to genuinely loving, knowing and looking after it. The only way forward is to stop concreting over the countryside and poisoning it, and us, with chemicals, ideas that don't go down well with big business. The construction industry and government would have us believe that building on this precious resource, which gives us life, is "protecting and enhancing" it. To say we are being deceived is an understatement - and deceit is a particularly unpleasant form of lying.

One question is the mentality of the powers that be who think that we can live without clean air and water and soils to grow food but not without an executive house. The word 'bonkers' is definitely an appropriate one to use here.

After listening to new Chancellor Rachel Reeves's statement that Labour is getting "Britain building again" (1,500,000 houses), the temptation to crawl into a corner with a bottle of wine and think "That's it, we're dead" was pretty strong. However, we are all stronger and more powerful than we are led to believe or think. If an animal's young are in danger, their mother, no matter how mild and gentle they normally are, will turn lethal to protect them. Our young (yours, mine and everyone's) are in danger. They are facing starvation in a brutal, bleak world within a few decades because of policies like 'Build, Build, Build'.



In my eyes, we either stand by and do nothing or we protect them. At the moment, we have a voice; it's not yet been totally crushed. I'm going to use mine to write / talk to our MPs, councillors, newspapers, TV, environmental organisations (who need to put their heads above the parapet), celebrities and anyone else I can think of. I'm also going to use my feet. I've always liked Bob Marley ('No, Woman, No Cry'). The lyrics of the chorus of his song 'Get up, Stand Up' are ones that really resonate with me every time I hear them. They are: "Get up, stand up ... Stand up for your rights ... Get up, stand up ... Don't give up the fight".

Annie x



LOOK and LEARN

by Revd. Angus McCormick ☎ 01462-712096
Minister of Shillington Congregationalist Church

So the Bedfordshire Regiment cap badge has a part Maltese cross on it; 3 arrowhead shaped quadrilaterals. It is a badge of honour and service.

As we look at our own village symbol on our War Memorial we see many things; first there is a Celtic Cross with 4 arms; there is a circle in the cross; in fact there are 2 circles within the cross, an outer and inner circle; then within the within the circles and on each wing of the cross there is a celtic knot or symbol ; finally at the centre of the Cross there is a plain circle. Wow - what a lot to reflect on and it was all carefully planned and cut out in stone.

The Cross is of course a Christian symbol of faith, of the risen Christ. The 4 arms of the Cross symbolize each corner of our world. Like the two circles these represent inclusiveness - the whole world. The 4 Celtic symbols within the 4 arms of the Cross often are said to represent water, fire and earth, and also the spirit. It is another way of thinking about what makes up our existence. You could say that a sense of eternity is symbolized in the continuous line that makes up the Celtic knot.

Our Cross on the War Memorial has been there since 1922. It has been a focus for all who served not only our village but the cause of freedom for all in the world. Of course we can all interpret these symbols as we want to; even make up our own meanings for each part. The Cross has a place in history and is still very much a living symbol for many today.



Personally, I like the sense of us all being connected in the continuity of life and also connected as a global family. We could add for better or worse. Indeed the Celtic symbol is often used by those getting married. Well, it is a timely reminder for us all to remember that none of us can live fully in isolation. Though 'earth, water, fire' are vital elements in existence, Aristotle and Shakespeare added 'air' to these vital elements.

We might want to ensure our precious fresh air is all the more valued in today's world without which there is no life for any of us. In our faith communities we often speak of God as the breath of life. We even sing a hymn 'Breathe on me breath of God' that reassures and confirms our belief in God as the life giving spirit.

Don't get caught up in too many knots but we can look and learn.

Every blessing, *Revd. Angus*



CONGREGATIONAL CHURCH NEWS

47 Church Street, Shillington
www.shillingtoncong-church.org.uk

SERVICES:

The Revd. Angus McCormick is available for pastoral needs as always. His telephone number is 01462-712096. Sunday Services continue at 10.30am every Sunday unless otherwise stated. Visitors always most welcome.



FRIENDLY WELCOME SPACE:

This weekly event (apart from public holidays) runs very successfully from 10.00am until 12.00 on Mondays at the Church. Special thanks to the volunteers who help and for donations of food and refreshments. It is a relaxing time and you can come and go as you please. Easy access for those who have mobility issues.

BEDFORD FOODBANK:

Thank you to the local community for the donations that continue to be made to the Food Bank. Please leave any donations in the box located at 1 Bells Close. The need is every increasing, particularly during the school holidays.



Items currently in short supply:

Tinned Vegetables	Tinned Meat
Tinned Rice Pudding	Tins of Fruit
Deodorant	Long Life Fruit Juice
Bags of Rice 500 gm	Tins Tuna
Jars Coffee	Cereals



SHILLINGTON SPITFIRES CRICKET CLUB REMAINING GAMES - 2024

Opposition	Date	Location	Game Format
Silsoe CC	Sunday 1st September	Home	40 overs
Pirton CC	Sunday 15th September	Away	40 overs
Pirton CC	Sunday 22nd September	Home	40 overs
Pirton CC	Sunday 29th September	Away	40 overs

BOWLES GARAGE ARE CELEBRATING 50 YEARS IN BUSINESS THIS AUGUST



Bryan as a mechanic at Trimoco

We set up in 1974, when Bryan Bowles left Trimoco in Luton to start on his own, purchasing the site at High Road from Ken Brown. At the time it was run as a small garage, with a workshop and pit where the petrol pumps now stand. The 'shop' was a small wooden hut next to the petrol pumps. A blacksmith occupied part of the current yard, with the rest as the garden to the house (now the current garage shop). The trusty anvil is still used today.

Keen to grow the business, Bryan demolished the small workshop and built a new garage where the current workshop now lies. This was developed over time to provide more working space. In the late seventies, Offley Garage was bought, and Jackie and Bryan ran them both for some time, before concentrating back on Shillington. As well as repairs, car sales started as the site grew.

Despite the popularity of self-service petrol pumps, attended service was (and still is) the Bowles way. As well as serving petrol, Jackie did the paraffin round every Saturday, delivering all over the village. In all weathers Jackie still serves customers with a smile, and plenty of treats for any furry visitors.

The shop also gave Bryan the perfect location for a spot of wheeling and dealing, everything from snow shovels and toys to garden furniture and fire damaged wine. After buying several hundred yoyos, he started a yoyo trend amongst the local children to clear the stock. Within a couple of weeks, he'd sold out.



In 1985, Mark joined as an apprentice mechanic. He then trained in bodywork, enabling the family garage to expand even further with a modern body and paint shop. Since then, he's turned his hand to all areas of the garage, making sure we look after our customers as best we possibly can. Mark oversaw a major refurbishment in 2006, creating the modern garage we see today, including state of the art spray booth and welding equipment.

The local community has always been very important to us, whether as staff or customers. We've enjoyed supporting the local football team (this was a must for Bryan), going into the Lower School to explain what we do, and getting involved with the scarecrow competition.



We would like to thank everyone who has supported us over the past fifty years.

To celebrate this milestone, we're running a competition where each month one customer will win, entitling them to a MoT test at the 1974 price of £1.70. This will run from August to December 2024.

THE
WORKING
WOODLANDS CENTRE

The
Greensand
Trust

Woodland Crafts Day

Sunday 13th October

Working Woodlands Centre, Maulden Wood



Celebrating traditional and contemporary woodland crafts-watch experts and have a go yourself!

Free to attend- just turn up!

Refreshments available on the day.

Children are welcome but must be supervised at all times (some activities will be unsuitable for them).

More information by scanning the QR code.



For more details visit: www.greensandtrust.org

Tel: 01234 743666 Email: info@greensandtrust.org

The Greensand Trust, The Working Woodlands Centre, Maulden Wood,
Haynes West End, Bedfordshire, MK45 3UZ

Follow us: [@greensandtrust](https://twitter.com/greensandtrust) [f/greensandtrust](https://facebook.com/greensandtrust)

The
Greensand
Trust

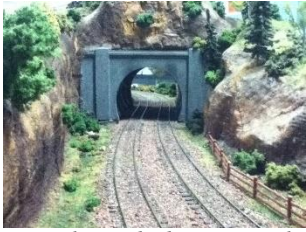
Registered Charity no. 1077355



SHILLINGTON MEN'S CLUB

(Now in its 19th year)

<https://Shillingtonmensclub.co.uk>

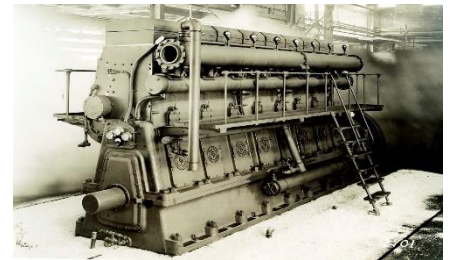


Our first cultural event of the Summer took place on the 1st June at Clive Butler's in the village to join him in "playing trains" in his long garden, where he has built an impressive narrow gauge railway operated by both steam and diesel engines. Fourteen members enjoyed this sociable gathering where we had the opportunity to try our hand driving the locomotives. Linda kindly provided bacon rolls and drinks to satisfy our appetites. Thank you to Stewart Rataj for organising this event and also to our splendid hosts Clive and Linda.

On the 12th June 18 members attended an evening meal at The View in Pegsdon. Here members tucked into a choice of Ham, Egg & Chips, Fish & Chips or Sausage & Mash followed by a sweet of their choice. Brian Pettifer won the raffle. Thank you to Stewart Rataj and Colin Hands for organising this event.

On the 19th June 18 members attended a lunch social at our very own Musgrave Arms. The weather was kind to us and we ate "Al Fresco" in the garden from their extensive menu. Again, thank you to Stewart and Colin for organising this event. Tony Bird won the raffle.

Our second cultural visit took us to the Prickwillow Engine Museum near Ely on the 30th June. Once again bacon rolls greeted our arrival followed by an interesting talk about the Fens, the pumping station's history and its six engines. The pride of the museum is its 100 year old Mirrlees 5 cylinder diesel engine, now retired, that was fired up as we watched, plus a further five engines, all operating on the day, rescued from closed Fen pumping stations and brought back into smooth operation by the small team of volunteers who run the museum.



There was extensive information about the origin of the Fens created during the Ice Age and its drainage from the 16th to the 19th century with the establishment of a series of sluices and pumps, originally dependant on 500 windmills, followed by large steam pumps in the 18th century and then diesel pumps like the Mirrlees at Prickwillow, now sadly replaced by electric pumps. Thank you to Michael Bradley for organising this very interesting visit.



On the evening of the 12th July 22 members attended an evening meal at the newly refurbished The Bull in Barton Le Clay. Here members had a choice of Ham, Egg & Chips, Thai vegetable or Chicken Curry or Meat & Potato Pie and Veg. This was followed by Rhubarb & Ginger Cheesecake or Apple & Blackberry Crumble or Cheese & Biscuits. A really good night was had by all. Thank you to Stewart and Colin for organising this event. Jeff Redman won the raffle.

Finally, on the 24th July 42 members, partners and guests were invited to a Garden Party at our Chairman Kevin Johnson's house hosted by himself and his wife Nicola. The weather was fine and we all enjoyed the fantastic buffet and drinks that our hosts provided.



During the afternoon Kevin invited guests to a personal guided tour and talk about his very impressive car collection and a tour of the beautiful garden. Kevin's knowledge and enthusiasm of the cars is extensive which shone through and we all learned something new about their performance, history and manufacture. A huge thank you to Kevin for that.

Those who chose not to attend the tour of the cars, instead took a stroll around the beautiful garden and pond or simply continued their leisurely conversation on the terrace, it was simply a magical afternoon enjoyed by all! A huge thank you to Kevin and Nicola for hosting such a memorable event.

Future events:

- ★ 14th August - Mid-Summer BBQ at The Greyhound in Haynes.
- ★ 28th August - Lunch Time Social at the Musgrave Arms.
- ★ 31st August - Aston Martin Heritage Festival at British Motor Museum, Gaydon, Warwickshire
- ★ September evening meal t.b.a.
- ★ 25th September - Newark Air Museum.
- ★ 16th October - Lunch Social at the View
- ★ 23rd October - McLaren and Aston Martin Dealerships Hatfield.
- ★ October – Evening Meal t.b.a.

Membership:

Current membership is 43 members. There are 8 elected Committee members who meet every 12 weeks to review and evaluate past events, plan future events and review the Club's finances.



The Club offers members a bi-monthly opportunity to socialise and enjoy friendly conversation and comradeship over a good pub meal and beverages or a visit to a place of cultural or historical interest. This is the essence of the Club.

New members are warmly welcomed, so any new residents to the village, please take the opportunity to embrace village life, meet local people and come along and see what the Club has to offer! Membership is £5 to join with an Annual Membership of £15.

Contacts:

<p>Events Co-ordinator - Michael Bradley (01462 711162) Email - michael894bradley@btinternet.com</p>	<p>Chairman – Kevin Johnson (01462 712768) Email – kevinjohnson360@msn.com</p>
---	--

PEGSDON VIEW



Our long awaited summer seems to have finally arrived in the last few days, though we're still getting a fair amount of wet weather which I'm not unhappy about as my tomato plants are doing pretty well with little intervention from me.

The garden is going a bit mad actually and it feels like a non-stop task to keep on top of it, we've embraced the weeds in the front garden and are letting them do their thing. I think the wild carrot is especially pretty with the single red flower in the center of the white.

We've a firm date for installation of the defibrillator in early August after a little delay on the supplier's side, which we're all very pleased about. Our other fantastic news was the safe arrival of a gorgeous baby boy, huge congratulations to James and Jasmine!



It great that our good news is so good as it definitely outweighs the not so good stuff that has been happening. Sadly we had another accident on the Hitchin Road last week, the usual spot. A head on collision, the road was closed for several hours and one party airlifted to hospital. It's awful that it keeps happening and the Central Beds highways team are not yet considering any preventative measures.

The parish council are kindly following up on the traffic monitoring exercise that was carried out a few weeks ago on the Hitchin Road and the recent election gave some of us the opportunity to bend the ear of our election candidates on the topic. I was never before so pleased to be doorstepped.



We're also happy that the planned water outages are over and done with and eternally hopeful that the funding will be approved next year to get the rest of the necessary remedial works completed.

Finally, a shout out for The View, they've some lovely events planned for August so do pop in or keep an eye on their social media to find out what's on and when.

Wishing you all a fantastic summer, keep safe and well, *Caroline*

SHILLINGTON SHORT MAT BOWLS CLUB

MEET AT

SHILLINGTON VILLAGE HALL

Monday afternoons - 2.00-5.00pm // Friday evenings - 7.15-9.15pm

We are currently on our summer break and will reopen the club on the 16th September 2024.

We held our Annual General Meeting on the 28th June and the finals of our Aussie pairs competition was held on the same evening. Congratulations to Kevin Hankins and Tony Duke, two of our new members who were victorious on the night.

Members also attended the Hertfordshire Short Mat Bowls AGM and presentation evening on the 8th June. Shillington team members walked away with an amazing 17 trophies and the new Club 7's cup. Congratulations to all those who took part in the Hertfordshire competitions.



Club 7's team

Left to right

Paul Bruce, Julia Bruce, Bill Gearing, Toni Gearing, Neil Rixon and Trevor Knight (Brenda Hutty and Clive Mark also part of team but not at presentation night).

Also congratulations to Julia Bruce who has been selected to be part of the England Ladies Short Mat Bowls Squad.

Anyone interested in joining the club is welcome to come and have a try (for free) to see if they like it. We have spare sets of bowls available and you only need to have a flat pair of shoes with you to enable you to play. You can either turn up to the village hall on a Monday afternoon or a Friday evening, or if you prefer call or message Michelle (contact details below) in advance.

Experienced members provide support and guidance for new and developing players and members can join in with regular county playing and learning activities at the County venues in Hatfield and Stevenage.

For further information please contact

Michelle Conlon (☎ 07974-772702) conlonmichelle@sky.com

Or **Derek Lewison** (☎ 01462 711504)

MEMORIAL PLAYING FIELD/SOCIAL CLUB - UPDATE

(Registered charity no: 300065)



The Playing Field continues to be well used for both community sporting activities and social events. A lot of these activities happen thanks to an amazing group of volunteers (definition of a volunteer...."someone spending time, unpaid, doing something that aims to benefit the environment or someone who they're not closely related to").

*The cricket pitch has seen much voluntary hard work to bring it up to match play and we were able to enjoy the first game on Shillington soil for over 20 years on Fathers' Day. Shillingfest24 was the best one yet, bringing together the whole community for an enjoyable afternoon of fun, entertainment and food in the sunshine. Date for next year's event - **Saturday, 28th June**. We are now working on the **annual fireworks spectacular on Saturday, 2nd November**.*

The new path to the play area has now been completed, although weather conditions and broken machinery meant the contractor had to return to finish it. Hopefully the surface will provide access for all.

As an update with regard to the Social Club - a lot of effort has gone in to boost the funds so that work can commence for the planned refurbishment. Weekly meat raffles, BBQs, donations, etc. have helped build up the monies earmarked for the works. The total project cost is around £110,000.00 with £20k from Parish Council (from funds originally held for the new community building which isn't happening now), £20k from Playing Field Committee and £30k from Social Club funds. Together with all the other fund raising activities the pot now sits at £76,149.25 and increasing weekly. A quick thank you to Andy Gibbs & Peter Farmer for all their support on this project and helping apply for the grants.

Originally works were planned for January 2024, but we had to delay commencement as, when applying for grants, the applicant usually has to have matched funding (for example if we apply for £50k from a particular funder, we have to match fund a percentage amount from another source).

We are now pleased to confirm that the works on phase 1 of the refurbishment will hopefully start sometime in September and last about 6 weeks during which time the Club will need to be closed - this is for a new roof and removal of central pillar in the middle of the Club by the bar. This phase will still leave us with enough match funding for either of the two grants we are now pursuing. Keep your fingers crossed we are successful. Both Social Club & Shillington Village Facebook pages will be updated with further details as things progress.

Parking continues to be an issue and we appreciate how frustrating this is for Greenfields residents, particularly during football tournaments. AFC Shillington are trying hard to marshall events. We are looking at turning the old play area into a proper car park which should give us additional spaces for both user groups and residents, but as can be appreciated, this will not come cheaply and we will need to find funding to pay for it as well as planning permission for change of use. This latter item is currently being progressed. So if you want to see continued improvements to this great village facility please continue to support us. All financial donations greatly appreciated!

Gavin
Chair – Shillington MPFC

Sally
Secretary – Shillington MPFC

VILLAGE HALL UPDATE

(Registered charity no: 300066)



At the AGM on 17th July Sylvia McCafferty stood down as Chair on the committee having served for 3 years. Sylvia was thanked for her hard work in getting the funding for the roof and presented with a card and plant. The existing committee were thanked for their work during the year and will continue to run the Hall. Thanks also to Hall Cleaner Yvonne and supporting local trades - Mark the Spark and plumber Matthew.

We do not now have a Chair, but can continue with existing trustees and officers in positions of Treasurer (Denise), Secretary (Katie), Vice-Chair (Sally) and Booking Secretary (Mags). We are pleased to have two user group trustees - Liam from Parish Council and Derek from Bowls Club. Anyone else able to join the committee would be most welcome. We only have 6 meetings a year so nothing too onerous. We are also looking for a voluntary 'gardener' just to pull up the weeds and do a litter pick every so often. Just contact any one of us if you can help.

*Current funds will allow us to 'tick over' and continue providing a valuable village facility as well as carry out minor improvements. Fundraising will be key this year. We did a bric-a-brac stall and provided refreshments at the end of May for the Village Garage Sale and another bric-a-brac at Shillingfest and are now planning a Halloween event for the kids on **Sunday afternoon, 27th October**; an old picture show (courtesy of the lovely Andy Gibbs) on **Sunday afternoon, 24th November** and live band **FYNNIUS FOGG** on **Saturday evening, 7th December**. More details of all these events in next edition!!*



Sadly we've lost one of our regular user groups - Shillington Baby & Toddler Group. Despite a lot of hard work to try and find a replacement committee of trustees for the charity, the current 2 members are having to finally wind up the regular Friday morning sessions for village babies, toddlers and their mums - such a shame. The toys, little chairs and tables will continue to be stored at the Hall, should anyone else want to step up in the future. Village Hall Committee will be able to hire out this equipment for kids' parties at an additional cost when booking. Additionally, the funds currently in their bank account will now pass over to the Village Hall to be 'ringfenced' for a period of 3 years and if after that time no new group emerges, the funds will pass into the Hall's accounts.

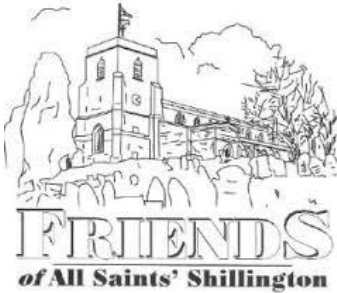
Don't forget to recycle your old clothes in the clothing bank in our carpark – this is a nice little earner as we get a donation from the weight of clothes you are recycling.

Thanks to those of you who have used the hall during the year and we look forward to your continued support. We hope to have the website up and running shortly, which will provide all information and make bookings and payments easier.

☎ 07376-682935

e-mail: shillingtonvillagehall@yahoo.com

HOLDING ON..... TO OUR PRECIOUS CHURCH ON THE HILL



I would like to begin this edition by paying tribute to Denise Randall, who is standing down from the Friends' committee after two decades of volunteering! Denise has been a dynamic, effective and creative member of the Team and will be greatly missed.

A good time, therefore, to raise the issue of **recruitment**. If you are interested in joining the committee or helping with our activities and events, please do get in touch. We need all the help we can get to ensure the village's iconic church is kept in good condition.

I am delighted to be able to update you on the wonderful support from **The Crown**, who have made us their charity for the year. They have already donated well over £1,600. Do keep up with their events on the village events calendar <https://shillington-hub.org.uk/calendar/> or on the Friends and Crown Facebook pages.



Our latest major restoration project is almost complete. Many of you will have been enjoying watching the skilled work of the stonemason as he has been working on the badly eroded North Door. The before and after pictures show what a wonderful, and very necessary, job he's done.



Events: - We would like to thank everyone who visited our stalls at the very successful **Shillingfest**. Between the Raffle, Tin Can Alley and the amazing Human Fruit Machine, we made over £450.

Sunday Teas continue at the Church between 3pm and 5pm every Sunday until the end of September.

Next up, we have a **Bear Hunt** on the 29th of September and then the much-anticipated return of **Joy to the World** on the weekend of 18th -19th October. If you would like to join the choir or get involved in JTTW please contact Joy Robinson jcmr@hotmail.co.uk



The extraordinary Human Fruit Machine. Built by Ian Harvey, operated by Jackie and friends and brilliantly promoted by 'barker' Tim!

And finally, if you would like to support the work of the Friends in looking after our beloved Church on the Hill there is a form on the next page.

Many thanks,

Andy Gibbs, Friends of All Saints' Church (bazwell2@gmail.com)

If you would like to make a donation and receive regular updates on the work of

Friends of All Saints' Church, Shillington

THERE ARE 2 EASY WAYS TO PAY:

1. You can make a donation by cheque/post

I/we enclose a donation of £..... to Friends of All Saints' Church, Shillington for the current year.

Name

Home address

.....

email address

I would like Friends of All Saints to be able to reclaim tax on my donation (see below):

(Yes / No) (Please delete as appropriate)

Signed..... Date

Please return this form, signed, together with your donation, to the Membership Secretary of Friends of All Saints' Church:

Joy Robertson, 18 Vicarage Close, Shillington SG5 3LS

Or

If you'd prefer to pay online:

HSBC, Friends of All Saints Church, sort code: 40 24 20, a/c No. 71596985

How we can ADD 25% to your donation. Under tax legislation, the Friends can recover some of the income tax you pay on any of your taxable income. In allowing us to recover this tax, you must have paid, or be due to pay, an amount of income tax at least equal to that we will be able to reclaim on your donation, this being 25p for every £1 you give.

In order for us to reclaim this very valuable bonus to our income, you need do nothing at all except sign and tick the box above to confirm that you are a taxpayer. We thank you in advance if you are able and prepared to do this.

Alternatively, donations can be made via the QR code below.



Reg Charity Number 1060329

SHILLINGTON - WANDERBUS

Bookings & Info Tel : 0300-123-3023

www.wanderbus.org.uk E: thewanderbus@gmail.com



NEW TIMETABLE – VALID FROM 2nd September 2024

Valid from 2 nd September 2024		"Stops at all Bus Stops on Request"	
W2 BEDFORD	- 2 nd Wednesday of Month	OUT	RETURN
Marquis Hill (W bound) / High Rd		09.10/09.11	RR
Hanscombe End Rd / Bury Rd all stops		09.13 / 09.15	RR
Interchange Retail Park / St Pauls Sq (Corn Exchange)		09.45 / 10.00	12.15/ 12.00
W3S BIGGLESWADE	- Every Monday	OUT	RETURN
Bury Road / Hanscombe End Rd - all stops (S bound)		09.34 / 09.36	RR
High Rd / Marquis Hill (E bound)		09.38 / 09.39	RR
Biggleswade - Retail Park		10.10	12.10
Station / Town Centre – pickup Church St bus stop o/s Asda		10.15	12.05
W5 BIGGLESWADE	- Every Friday	OUT	RETURN
Hanscombe End Rd		09.47	RR
High Rd. – all stops to Marquis Hill		09.51	RR
A1 Retail Park - Station / Town Centre		10.25 / 10.30	
Pickup - Church St., bus stop o/s Asda / A1 Retail Park			12.10/12.15
W6A CAMBRIDGE	- 4 th Wednesday of Month	OUT	RETURN
Bury Rd – all stops / Hanscombe End Rd.		08.56 / 08.59	RR
High Rd / Marquis Hill (E bound) – all stops		09.00 / 09.01	RR
Downing St. o/s John Lewis		10.15	14.10
W8A ST ALBANS	- 1 st Wednesday of Month	OUT	RETURN
Marquis Hill / High Rd – all stops		08.58 / 08.59	RR
Hanscombe End Rd.		09.02	RR
St Peters St. – o/s Santander Bank / pickup opp Santander Stop 13		10.15	14.00
W10 ST NEOTS	- 2 nd Thursday of Month	OUT	RETURN
Bury Road / Hanscombe End Rd– all stops		09.23 /09.26	RR
High Rd / Marquis Hill (E bound)		09.28 / 09.29	RR
St Neots - Market Place		10.15	12.20
W11 MILTON KEYNES	- 3 rd Thursday of Month	OUT	RETURN
Marquis Hill (W bound) / High Rd		09.18 / 09.19	RR
Hanscombe End Rd / Bury Rd. – all stops		09.21 / 09.24	RR
MK - Midsummer Blvd / M&S (Stop J3) / Depart John Lewis (Stop E3)		10.15	13.15
W12 HITCHIN	- Every Tuesday	OUT	RETURN
Marquis Hill (W bound) / High Rd – all stops / Hanscombe End Rd		09.24 /09.27	RR
Hitchin – Bancroft Stop D – Depart o/s Oliver Bonas		10.05	12.10
W14 WELWYN GARDEN CITY	- 1 st Thursday of Month	OUT	RETURN
Bury Rd, / Hanscombe End Rd – all stops		09.00 / 09.04	RR
High Rd, opp Village Hall / Marquis Hill (E bound)		09.06 / 09.07	RR
WGC Central Bus Station – Stops A/B		10.05	12.15
W16 – STEVENAGE	- 3 rd Wednesday of each Month	OUT	RETURN
Bury Rd., - all stops / Hanscombe End Rd.		09.21 / 09.24	RR
High Rd. / Marquis Hill		09.26 / 09.27	RR
Tesco Extra , The Forum Centre / M&S Roaring Meg Retail Park		10.05 /10.10	12.10 / 12.05

EXCURSIONS – BOOKINGS ONLY - 4TH THURSDAY OF MONTH

RING FOR DESTINATION DETAILS & BOOKINGS or EMAIL

thewanderbus@gmail.com

**** 16 Seater Buses available for Private Hire ****



ALL SAINTS ILLUMINATED

To celebrate or commemorate your special occasion please contact:

Catherine on **07710-823384**

or e-mail catherine.scleater@btinternet.com

It only costs **£25** to sponsor a whole week's illumination - a perfect way to commemorate a special family occasion or loved one's anniversary.

Sponsor	Message	From	To
Val Fiore	<i>In loving memory of Michael on your 78th birthday on 19th August. We love and miss you so much every day. Val, Lisa & Family Also Congratulations and much love to Lisa & Gary on your silver wedding anniversary on 14th August. Mum x</i>	Sunday 18 August	Saturday 24 August
Pamela & Darren Bakewell	<i>On the occasion of Eric 'Jim' West's birthday. Thought of every day. Love Pamela, Darren and all the Family.</i>	Sunday 15 Sept	Saturday 21 Sept

SHILLINGTON & DISTRICT CLASSIC VEHICLE GROUP

Tuesday fortnightly summer meetings supporting our local community pub:

THE MUSGRAVE ARMS, APSLEY END ROAD, SHILLINGTON, SG5 3LX

*Arrive anytime, most enthusiasts congregate from 6pm onwards and stay until late.
Meetings take place on Tuesdays every 2 weeks until the end of September.*

Bring along an interesting car, motorcycle, light commercial or 3-wheeler.

If you don't have a suitable vehicle, come to have a look and a chat.

These get togethers are informal and for all the family, the aim is to have a fun evening with like-minded people.

Why not join our lively WhatsApp Group?

Just contact **Zara** on **07860-646323** for more information.

REMAINING DATES FOR 2024:

August - 13th & 27th // September - 10th





THE FRIENDLY PLACE

(Spring and Summer schedule from 15th April 2024)

At the Congregational Church, Shillington

**Mondays, 10.00 am to 12.00
noon** (closed Easter Monday and 8th April)

Join us for tea, coffee, cakes and friendly chat.
No charge but small donations are welcome!
We may be able to offer a lift if you need it.

Hosted by Linda and Trish of All Saints' Church and Angus
and Nola of the Congregational Church Shillington.
For more information you can call Linda 01462 711761
or Trish on 07754760073

LEECH

Live Covers Band At

Shillington Social Club

Saturday 10th August

On Stage 9pm



LEECH Will Be Performing Songs By:



Oasis • The Rolling Stones • **theKILLERS**

The Who • Pink Floyd • The Jam • **T.REX**

REM • The Beatles • *David Bowie* • **KINGS OF LEON**



www.jemonrock.com/leech



LEECH Covers Band

RAMBLING ON with DEREK TURNER

☎ 01462-712462

derek.turner@phonecoop.coop

Bedfordshire's new nature reserve



Nature is having a hard time. As we live near the brook, it is noticeable how few insects and bats are around this year. Butterflies, too, have suffered and I felt so sorry for the single Large White that visited my garden that I took the net off the cabbages and told it to "Help itself". No doubt, many have been victims of the wet weather earlier when many species were breeding. The incessant rain compounded problems that years of habitat loss and ruthlessly efficient agriculture have caused. But let's suppose that the land around here had not been farmed intensively for 38 years and was left unmanaged instead. What would it look like?

We can get a good idea if we travel to Bedford and the same distance again past it to the tiny village of Knotting where the owner of Strawberry Hill Farm did just that. In 1988 when there were surpluses of many foodstuffs and farmers were given incentives to reduce production, he decided to stop farming altogether. Without the plough disturbing or chemicals bombarding the soil to kill weeds or pests, nature has taken over the 153 hectares (377 acres) area holding.

A famous example of rewilding is the Knepp estate in Sussex but Strawberry Hill had already been going for 12 years before that began. Both places now have a mix of trees, shrubs and grassy glades full of wildflowers that are buzzing with animal life. At Strawberry Hill, species that we would struggle to find in Shillington have not just returned but are thriving including dragonflies, turtle doves, various warblers, nightingales, owls, orchids and rare beetles.



Thanks to a generous grant by Biffa and other support, the Wildlife Trust for Bedfordshire, Cambridgeshire and Northamptonshire has already acquired part of the farm and the remainder is now on the market. The trust want to buy it but need another £1.5 million. They've raised over £300,000 so far and are seeking more donations - large or small - to reach their target. You can help them do it and provide a major boost for a huge number of once-common species. Find out more at <https://www.wildlifebcn.org/strawberry-hill>

Path Maintenance Task Force



Thanks to several readers of the June edition of *Parish News* rallying to my call for support, I am pleased to announce that the scheme to unblock local footpaths and bridleways has started well. Several volunteers have worked with me to clear brambles, nettles and branches that were choking some of the most important field paths. These include the bridleway near the church, the path off Hanscombe End Road south leading north towards Brookside and the route through the bushes at Church Pannell on the way to Gravenhurst. There are several other places around the parish which we shall visit in due course. If you notice somewhere that needs attention or would like to join our team for an hour or two, please contact me with your phone number. We are using What's App to notify supporters about future tasks.

There is other positive news. In mid July, Central Bedfordshire Council's contractor mowed some of the footpaths. Some farmers are always conscientious at maintaining those that pass through and around their crops - thanks very much to all of you. Unfortunately, others are less conscientious and failed to create a gap as the law requires. Now that the harvest is underway, these paths will become easier to use again.

However, it may be a while until all of Shillington's extensive path network is back in good condition and meanwhile, fast-growing nettles and brambles that were pruned back earlier will encroach again in some places. I advise taking a pair of secateurs with you if you're out for a stroll - just in case. If you use them, you'll be doing those who follow you a favour too.

Letterboxes - the good, the bad and the downright difficult



Have you ever tried posting something to yourself? Perhaps you should give it a try? Besides distributing *Parish News*, I've delivered many leaflets and letters for various causes in my time and it never ceases to amaze me how awkward some letterboxes are to use. An outer flap, followed by badly designed, stiff or misaligned inner ones and various means of cutting out draughts can sometimes combine to exclude or repel whatever you're trying to deliver. What's more, some are so low down that you have to kneel down to use them, even on some new houses - which I find surprising.

And then there are dogs. Why do some owners allow them to roam in the room directly behind the letterbox where you can't be sure if the ends of your fingers will survive their attention? I'm surprised that having a well-maintained and user-friendly letter box is not a legal requirement.

It's also frustrating that some front doors that are almost side by side require a long walk to get from one to the other because a fence or hedge intervenes. Perhaps those of you in this situation could consult your neighbour about creating a gap?



Next time you see a harrassed-looking postie, please be sympathetic. They may have already had to grapple with difficult deliveries and walked unnecessary extra miles before they reach you.

LAPTOP & COMPUTER

**Printer - Apple Mac - Home/Office
computer problems**

**Setup, Repairs, Internet, Wireless
Virus Infection, Hacked, Email
setup, Network, Data Recovery**

**7 Days service from £40.
No Fix - No Fee
Qualified and Experienced.**

We visit you

**☎ 01525-306316 or ☎ 07925-338435
PcLaprepairs@gmail.com**



SHILLINGTON CHILDMINDERS

Childminders provide safe, friendly home environments for children to play and have fun whilst gently learning through their play. We take children on outings to farms, play centres, splash parks, museums and libraries, as well as teach them life skills such as helping to do shopping, gardening and cooking.

We are individually registered to Ofsted, have public liability insurance, follow the Early Years Foundation Stage curriculum, undertake regular training including Safeguarding and First Aid and receive regular newsletters and bulletins from professional organisations.

We provide the children with opportunities to learn social skills and experience different play resources at baby/toddler groups and other settings. We are able to cover holidays and other absences for each other where possible.

Some of us are able to provide up to 15 hours of free childcare a week for eligible 2 year olds, as soon as care starts, in the same way that nurseries and pre-schools can. We are also able to provide the free sessions for all 3 and 4 year olds; at least 15 hours per week or up to 30 hours per week (for 38 weeks of the year) depending on parental eligibility and the childminder's policy. The free sessions normally start the term after the child's 3rd birthday. There may be additional charges to cover e.g. food and outings.

We each have differing childcare availability such as before and after school care, daytime childcare, overnight childcare, ad-hoc care or flexible care e.g. for shift workers.

Please contact us as below if you have any childcare requirements for now or the future:

<p>Katie Brettell 07974-676089 katiebrettell@icloud.com</p>	<p>Carli Mauger 07912-549931 carlimauger@gmail.com</p>	<p>Deb Pateman 07934-480446 debpateman@msn.com</p>
---	---	--



PIXIES Pre-School



FOR LITTLE LEARNERS WITH BIG IDEAS!

Pixies Pre-School is run and managed by the school, we take children from 2 years until they start in Reception class, and we work closely to provide a smooth transition into school.

Children can start in Pixies class when they are ready to be in a pre-school environment.

We offer:

- ☺ A vibrant and fun classroom
- ☺ Qualified, dedicated, and experienced staff
- ☺ Fantastic outdoor area providing stimulating learning experiences
- ☺ We provide a range of imaginative and stimulating learning activities
- ☺ 15 & 30 hour funding

Come and see our fantastic new building. Tours are available, contact the school office.



Outdoor Explorers



Outdoor Explorers is our Monday morning adventure where we encourage all children to appreciate the natural world whilst developing their confidence, self-esteem and help create more independent learners inspiring our children about the great outdoors.

The sessions are run outside on the school field by our staff, come rain or shine.

Limited spaces are available.
Please contact the school office
for more information.

For more information, please contact us at:

Shillington Lower School

Greenfields, Shillington, Nr Hitchin, SG5 3NX

Tel: 01462 711637 Email: office@shillingtonlower.co.uk

www.shillingtonstondon.co.uk



As we end another school year we say goodbye to our year 4 children who leave us to move onto their middle schools. In the last week of term they performed their leavers assembly where they reminisced about their years spent at Shillington Lower School. There were lots of laughs, happy memories and some tears. They enjoyed an end of year party, leavers' hoodies and a year book each. We will miss you all and wish you the very best as you move to your next schools. Good luck!

Pixies pre-schoolers, who are leaving our pre-school and transitioning into Reception classes held their graduation ceremony and received certificates from the pre-school staff. We are looking forward to following their learning journeys in school.

During the last couple of weeks of the summer term we have enjoyed a year 3 and 4 production of 'Circle of Life', the children performed beautifully to their parents and carers and to the rest of the school.

We would like to also take this opportunity to thank our PTFA chair and committee who have helped organise and fundraise vital funds for the school. Some are moving on and a new chairperson will be taking over in September.

Over this year they have provided us with a music system, new curtains for the hall, the Widdershins Christmas show for the children and supported school trips by reducing costs to parents. They also fund the year 4 leavers' celebrations. Thank you for your help and support and all members of the PTFA who have given their time and support over the year.

There are places available across the school and so if you or anyone you know are interesting in come to have a look around Shillington then please contact the school office by email office@shillingtonlower.co.uk or call **01462 711637** in term time.

WILDFLOWER WALKS

Donna's Garden Designs - ☎ 07833-670934

As I meander through the fields on the school run, I have been struck this year by the amount and variety of wildflowers. I find it idyllic walking along the grass path with an array of wildflowers either side of me. Butterflies and bees fluttering by. Amongst the delicate bouquet was Clover, Wild Carrot, Yarrow and Meadow Buttercups.



The scent of one flower in particular is divine. Lady's Bedstraw, a small bright yellow flower with numerous tiny flowerheads. It gives out a sweet heady scent and covers the field like a golden carpet. Once used to stuff straw mattresses and used medicinally today. It attracts butterflies, bees and Hummingbird hawk moths. Which is what we desperately need. So many customers this year have commented on the lack of Bees. What a sad situation to be in as Bees are vital to our existence. The RHS thinks it is a combination of habitat loss, toxic pesticides, climate change and lack of early season food.

Talking to a neighbour we were saying how lovely it is to have wildflowers incorporated into the garden. Encourage them in for the bees. For example Foxgloves, Ox eyed daisy and Toadflax all look lovely in the borders and more than ever we need nectar and pollen rich plants.

Driving to a job in Letchworth I noticed that the council had created wildflower areas on the verges and they looked beautiful. We need more of this. Another customer discovered a Pyramidal Wild Orchid in her lawn. So all this is encouraging for the bees.

Lots of customers are asking for garden designs for wildlife friendly gardens. We just have to adapt and change our gardening habits to rewild the garden and not be so tidy! But to diversify to optimise homes for our wildlife. Other ways we can help bees is to mow lawns less. Leaving Dandelion flowers at the beginning of the year for them is one of the earliest foods for them.

Little bee baths can be sources of water for them to drink from. A shallow bowl with pebbles in so they can land safely and take refreshment. Making nesting sites too. They like to burrow under hedgerows and you can make or buy Bee hotels which have tiny holes and sticks and logs in for Solitary bees to overwinter.



So just little things we do in our gardens can enormously help our bees.

Donna x

JOBS IN THE GARDEN FOR AUGUST

- ✂ Prune Wisteria
- ✂ Keep the garden well watered and if going away ask a neighbour to do for you.
- ✂ Collect seed.
- ✂ Keep ponds topped up.
- ✂ Plant Calendula, Californian Poppies and Cornflowers.

- ✂ Pack bedding plants into gaps to give an extra wow factor
- ✂ Regularly dead head.
- ✂ Prune trained fruit trees, rambling roses, lavender and hedges.
- ✂ It's holiday season – get a deckchair and enjoy relating in your garden!

PLANNING APPLICATIONS

DECISIONS from CENTRAL BEDFORDSHIRE COUNCIL:

APP/P0240/W/23/3330197

Re application reference: **CB/23/01499/FULL** - The Old Rectory, Higham Road, Higham Gobion

Erection of a workshop outbuilding.

PLANNING APPEAL DISMISSED

APP/P0240/D/24/3338477

Re application reference: **CB/23/03449/FULL** - 20 Hillfoot Road

First floor infill link extension including the raising of the roof of the existing side extension. Erection of a 1.5 storey side extension following the demolition of existing single storey flat roof extension. New pitched roof dormer to flank elevation following removal of existing dormer.

PLANNING APPEAL DISMISSED

CB/24/00419/LB - 137 High Road

Listed Building: Replacement of the existing house windows, eaves fascias, soffits and gutters. Replacement external rendering throughout. Replacement roof tiles to the existing dining room roof.

GRANTED

CB/24/01832/NMA - 125 High Road

amendment to **CB/24/00755/FULL**.

Amendment to type of door in proposed new garage building to a single wider opening.

BOTH GRANTED

CB/TCA/24/00189 - 66 High Road

Works to trees within a Conservation Area.

RAISED NO OBJECTIONS

DISCUSSED BY PC BUT AWAITING A CBC DECISION:

APP/P0240/W/24/3341349

Re application reference: **CB/23/02764/FULL** - 17 Upton End Road

Erection of a new detached dwelling with associated works and demolition of existing detached garage and erection of replacement garage.

NO FURTHER COMMENT

APP/P0240/D/24/3340238

Re application reference: **CB/23/03275/FULL** - 126-128 Bury Road

Erection of a detached two storey sustainable dwelling together with a new vehicular access, parking and turning area, and associated private garden, landscaping and boundary treatment.

SUPPORT with comment that design and sustainability of building outweighs position outside of settlement envelope.

CB/24/01379/FULL. Land adjacent to F C Dawes and Son Ltd, High Road,. Erection of 9 dwellings.

OPPOSE

News
Central



email
alerts

Central
Bedfordshire

So much on offer for families this summer across Central Bedfordshire

Lots of activities for children and families over the summer holidays!



We are providing a wide variety of activities for families and children of all ages this summer.

Whether it's holiday clubs at our leisure centres, play sessions at our children's centres, or the popular annual Summer Reading Challenge at our libraries, there is something for every family to enjoy.

With over 1,000 hectares of stunning countryside, Central Bedfordshire offers families the chance to enjoy free outdoor spaces, walking and cycling trails, and scenic circular walks. Rushmere Country Park, Houghton Hall Park, and the Forest of Marston Vale will also host various events, including outdoor theatre performances and craft sessions.

We are also running activities specially tailored for children with special educational needs and disabilities (SEND) and their families, including SEND swimming sessions at pools throughout Central Bedfordshire.

With a mix of indoor and outdoor activities, there really is something for everyone!

Find out what's happening this summer across Central Bedfordshire!

https://www.centralbedfordshire.gov.uk/info/202/school_holiday_activities?es_c=7EB83CD8254D651CA1C2211BDE5E0345&es_cl=22ADAC1E7BA7340923FF6668320BAC47&es_id=p48%c2%a340

VILLAGE FACILITIES



SHILLINGTON VILLAGE HALL

All enquiries please contact:
the **BOOKING CLERK** on ☎ **07376-682935**
e-mail: shillingtonvillagehall@yahoo.com

*Large Hall - Stage - Small Meeting Room - Kitchen & Bar Facilities - Disabled Access & Toilet.
Fund raising Clothing Collection Bank in Car Park.*

- * **Children's Parties** * **Discos/Dances** * **Meetings** *
* **Toddler Groups** *
* **Indoor Bowls** * **Exhibitions** * **Circuit Training** * **Karate** *

The Car Park (when not in use by hall bookers) can be hired for events where village parking is limited.

The Village Hall Committee would politely request residents making use of the Car Park for overnight parking to please note (see booking sheet on Notice Board) that Hall Hirers take priority for parking for their bookings, if you could ensure you are not occupying the car park during these times.

Thank you ☺

SHILLINGTON SOCIAL CLUB

Greenfields, Shillington ☎ **07826-518667 (Gavin)**



- ☺ Meat Raffle every Saturday with proceeds to the Pavilion Refurbishment
☺ Local Free Range Egg sales

CURRENT OPENING TIMES:

- * **Mondays: 7.30pm-11.00pm** *
* **Thursdays: 7.30pm-11.00pm** *
* **Fridays: 7.30pm-11.00pm** *
* **Saturdays: 12 noon - 8.00pm** * **Sundays 12 noon-8.00pm** *

LICENSING POLICY:

Children aged 16 and under are welcome with an appropriate adult until 9pm on any day we are open. Social Club Committee



USEFUL TELEPHONE NUMBERS



CBC's trading standards department has provided the following numbers, to assist residents in identifying doorstep cold callers, purporting to be from energy or water companies, and enable checks with these organization if any reason for concern.

British Gas	General Enquiries	0800 048 0202
EDF Energy	Customer services	0800 096 9000
National Gas	Emergency Service Helpline	0800-111-999
npower	General Enquiries (landline)	0800 073 3000
	General Enquiries (mobile)	0330 100 3000
ScottishPower	General Customer Service (landline)	0800 027 0072
	General Customer Service (mobile)	0345 270 0700
SSE	General Enquiries	0800 980 8831
Anglian Water		0800 145 145
UK Power Networks	To report or get info on power cuts Text POWER and your postcode to 80876 www.ukpowernetworks.co.uk	National number 105

Central Bedfordshire Council, Priory House, Monks Walk, Chicksands, Shefford Bedfordshire, SG17 5TQ. (www.centralbedfordshire.gov.uk)	
General enquiries	0300 300 8000 (customer.services@centralbedfordshire.gov.uk)
Highways/Emergencies on the roads (fallen trees, etc). 24-hour emergency team	0300-300-8049
Dog Fouling/animal welfare	0300-300-8302
Flooding	0300-300-8049
Planning	0300-300-8307
Recycling/Flytipping	0300-300-8302
Police (Emergency)	999
Bedfordshire Police (non-Emergency)	101
Bus Information	0870-608-2608 or 01234-228337
Shillington Services (Martin Brogan) <i>for washing machine repairs, etc...</i>	07975-944394
High Road Stores/Post Office	0345 722 3344
The Crown Inn.....	01462-711667
The Musgrave Arms (Giuseppe).....	07739-864634 / <i>pub</i> 01462-712789
The View (formerly Live & Let Live).....	01582-882555

Parish Councillors – contact details:

John Hyde 07799-537346	Gavin Jenkins 07826-518667	Liam Keene 07867-993393	Angus McCormick 01462-712096	Richa Mitra via the Clerk
Annie Palmer via the Clerk	Tracey Petrie via the Clerk	Blake Stephenson 0300-300-8526	Mark Thyne 01462-712201	Derek Turner 01462-712462

VILLAGE CALENDAR

AUGUST

- 4 All Saints' Church Communion Service – Lay Minister Keith Callard – 9.30am
- 4 Congregational Church Service – Mrs. Hazel Beadle – 10.30am
- 4 All Saints' Church – Sung Evensong – Revd. Jenna Dearden – 6pm
- 10 Social Club – Band Night – “Leech” – from 9pm
- 11 All Saints' Morning Praise – Lay Minister Keith Callard – 9.30am
- 11 Congregational Church Service – Revd. Angus McCormick – 10.30am
- 14 Men's Club – midsummer BBQ – Greyhound, Haynes
- 18 All Saints' Church Communion Service – Revd. Peter Littleford
- 18 Congregational Church Service – Mrs. Sandra Galton – 10.30am
- 25 All Saints' Church Communion Service – Revd. Jenna Dearden – 9.30am
- 25 Congregational Church Service – Mrs. Janet Worley ‘ Favourite Hymns’ – 10.30am
- 28 Men's Club – lunchtime Social – Musgrave Arms, Apsley End
- 31 Men's Club – Aston Martin Heritag Festival, British Motor Museum, Gaydon

SEPTEMBER

- 1 All Saints' Church Morning Praise – leader TBC – 9.30am
- 1 Congregational Church Harvest Thanksgiving - Revd. Angus McCormick - 10.30am.
(Donations of non-perishable goods welcome for the Bedford Foodbank)
- 1 All Saints' Church – Sung Evensong – Revd. Jenna Dearden – 6pm
- 3 Parish Council Meeting – Congregational Church – 7.45pm
- 8 All Saints' Church Communion Service – Revd. Jenna Dearden – 9.30am
- 8 Congregational Church Service – to be advised – 10.30am
- 8 Friends of All Saints – Bear Hunt
- 15 All Saints' Church Communion Service – Revd. Peter Littleford – 9.30am
- 15 Congregational Church Service – Mrs. Sandra Galton – 10.30am
- 16 Bowls Club restart – Village Hall – 2pm
- 22 All Saints' Church Communion Service – Revd. Jenna Dearden – 9.30am
- 22 Congregational Church Service – to be arranged – 10.30am
- 25 Men's Club – Newark Air Museum
- 28 The View, Pegsdon – Macmillan Coffee Morning
- 29 All Saints' Church – Joint Service with the Congregational Church @ All Saints

OCTOBER

- 1 Parish Council Meeting – Congregational Church – 7.45pm
- 13 Woodlands Crafts Day – Maulden Wood
- 16 Men's Club – lunchtime Social – The View, Pegsdon
- 18-19 Friends of All Saints - Joy to the World Concert – more details next edition.
- 23 Men's Club – McLaren and Aston Martin Dealerships, Hatfield

The **PARISH NEWS** is a voluntary community paper produced by **Sally Stapleton**, published by **Lonsdale Print Solutions Limited (01933-233034)** web: www.lonsdaleps.co.uk and sponsored by Advertisers and Shillington Parish Council.

Views expressed in the articles and adverts do not necessarily reflect the views or opinions of the Editor or members of the Parish Council. ed4shillingtonnews@btinternet.com ☎ 07711-504489.
www.shillington-hub.org.uk