



# PARISH NEWS

covering

**SHILLINGTON, PEGSDON & HIGHAM GOBION**



**SANTA'S FLOAT  
IS COMING**

WE WILL BE COLLECTING FOR KEECH  
HOSPICE AND ALL SAINTS CHURCH

**SUNDAY 18TH DECEMBER APPROX. 16:30 - 19:30**  
**MARQUIS HILL, UPTON END, GRAVENHURST**

**MONDAY 19TH DECEMBER APPROX. 17:00 - 20:00**  
**HIGH ROAD NORTH, CHURCH ST, HILLFOOT, BURY END**

**TUESDAY 20TH DECEMBER APPROX. 17:00 - 20:30**  
**PEGSDON, APSLEY END, HANSCOMBE END, HIGH ROAD SOUTH**

All Saints'  
Church  
Shillington

**Issue 163 - December 2022**

*Deadline for February edition - Friday, 27<sup>th</sup> January 2023*

# PARISH COUNCIL



**THOMAS'S MEADOW:** a new proposal for 8 self and custom build homes with the remainder of green space being signed over to Shillington Parish Council to be kept in perpetuity for the village.

Many thanks to local residents who popped into the Village Hall on 17<sup>th</sup> November to provide feedback and useful comments to consultants, architect, Potton Homes and Parish Councillors in regard to the latest proposal for Thomas's Meadow. We understand that not all affected residents (Hillfoot Road, Preslent Close, Wheelwright Close, Elmhurst Gardens) received the leaflet of invitation.

This proposal is for 8 dwellings this time, retaining the public footpath across to New Walk and signing over the remainder of the meadow (about 60%) to the Parish Council on behalf of the village. Residents were asked how they would like to see the meadow left. The landowner is proposing to legally sign it over to us in whatever condition the village would like to see. There were mixed views as some residents would like it left as is with the current wildlife (deer, foxes, owls, etc) and others more of a village green style with some areas mown and with seating.

There was much discussion about the siting of the dwellings and how much they would impact on existing properties, however this proposal was merely an indication of how 8 properties could fit here, rather than final sitings. The consultants took away useful comments from those attending. Another area of concern was the loss of 2-3 parking bays (near the bus stop) and Councillors mentioned that it might be useful to incorporate a few spaces just inside the site entrance to help with parking problems in the area. We also mentioned inaccessibility to the site by contractors' vehicles via Church Street and concern as to how larger vehicles would access the site via the proposed entrance in Hillfoot Road.

The consultants felt that taking all residents' and councillors' comments into account, there may well be a planning application appearing around February 2023.



**CB/22/03640/OUT – LAND ADJACENT TO 70 HANSCOMBE END:**

Hopefully residents will have now heard the news that this application was **REFUSED** at the CBC DMC on 23<sup>rd</sup> November. Great presentations from our ward member Cllr. Alison Graham; resident next to proposed site Mandy Sedge and PC Chair Sally Stapleton – managed to persuade the committee that this was the wrong development in the wrong location.

There was much discussion about zero-carbon, carbon-neutral and heat pumps and trying to cram all we (Mandy & Sally) wanted to say in 3 minutes was challenging. Fortunately common-sense and current planning rules prevailed. Huge thanks to Alison and Mandy.

**CORONATION – 6 – 8 May 2023:** Now we have a date and additional bank holiday to be able to celebrate the Coronation, a meeting has been held with village organisation reps to see how best to mark the occasion. We've agreed to have a 'Picnic in the Park' on the Playing Field with musical entertainment and bring your own food, blankets, garden chairs, etc. This to take place on **Sunday, 7<sup>th</sup> May 2023**. Competition for the best 'Coronation Bonnet' and over the weekend village streets are encouraged to host street parties and get out the bunting. There will be prizes as we did at the Jubilee for best decorated house/street. More details to follow.

For all Parish Council issues please contact:

**Mrs. Helen Smith, Clerk to the Parish Council**

11 Hillside Close, Shillington, Hitchin, Herts, SG5 3NN. ☎ 01462-713224

email: [clerk@shillington-pc.gov.uk](mailto:clerk@shillington-pc.gov.uk) <https://shillington-pc.gov.uk>

## **ELECTIONS 2023**

*Not only are there elections for Central Bedfordshire Councillors next year, but also for your local Parish Council. It is likely that one or two current members will not be standing for re-election and their posts will need to be filled. Shillington currently has 10 members.*

**WHY BECOME A PARISH COUNCILLOR?** *By becoming a parish councillor you will be someone your community will look to for help, guidance and support - a community leader with the power to influence decisions for the benefit of the people you serve.*

### **WHAT IS EXPECTED OF A PARISH COUNCILLOR?**

- *Representing the views of residents within your parish.*
- *As part of the council you will have responsibility for running local services, such as open spaces and play areas.*
- *Deciding on how much to raise through council tax in order to deliver your council's services.*
- *Influencing and shaping the long-term development policy for the parish, and as part of the planning process, comment on planning applications in the parish.*
- *Improving the quality of life and the environment in your local area.*
- *Working to identify issues which are important to the lives of the residents you represent.*
- *Working to bring about improvements through local projects.*
- *Lobbying other service providers and working in partnership with other parishes and agencies.*

**HOW MUCH TIME DOES IT TAKE UP?** *Our Council meets monthly and members of the public are also invited to attend these meetings. Length of meetings depend on what's on the agenda. In addition to the regular meetings councillors may be required to attend 'ad hoc' meetings.*

**HOW LONG DOES A PARISH COUNCILLOR SERVE FOR?** *Once elected, parish councillors sit on the council for four years. If they want to stay in the post they can stand for re-election. This does not mean that you have to stay for four years. If you find it's not for you, or you can no longer meet the commitment, you can resign from the position.*

**ARE YOU INTERESTED IN BECOMING A PARISH COUNCILLOR?** *The best way to find out what it's like to be a parish councillor is to talk to someone who's doing it now. Go along to a parish council meeting, speak to one of the councillors and find out what they think of the role.*

**CAN I BECOME A PARISH COUNCILLOR?** *The easy answer is "yes". As long as you are:*

1. *At least 18 years old on the day of your nomination*
2. *A British citizen, an eligible Commonwealth citizen or a citizen of any other member state of the European Union.*

*You must also meet at least one of the following four qualifications:*

- *You are, and will continue to be, registered as a local government elector for the parish in which you wish to stand from the day of your nomination onwards*
- *You have occupied as owner or tenant any land or other premises in the parish area during the whole of the 12 months before the day of your nomination and the day of election.*
- *Your main or only place of work during the 12 months prior to the day of your nomination and the day of election has been in the parish area.*
- *You have lived in the parish area or within 4.8 kilometres of it during the whole of the 12 months before the day of your nomination and the day of election.*

# ANNOUNCEMENTS / ITEMS / NEWS IN BRIEF



A huge **THANK YOU** to regular contributors, advertisers, sponsors and distributors of this magazine.

Your kind support ensures the continuity of the Parish News.  
Best wishes to all readers and their families for a healthy, happy and peaceful Christmas and New Year. **Sally S.**

## SHILLINGTON CARE

Do you need help with transport from Shillington?  
We can get you to the surgery, hospital and collect your prescriptions.  
**Shillington Care** is an informal group of people able to give help.  
Give us a call and we will arrange for someone to pick you up and bring you back.  
Initially, speak to **Liz** on **01462-711594** or leave a message.  
If there is a delay on this number then call **07930-812940**



## WREST PARK VOLUNTEER OPEN DAYS



**Wrest Park Mansion, Drawing Room**

**Saturday 7<sup>th</sup> January 2023 - 11am-1pm / Sunday 29<sup>th</sup> January 2023 - 1pm-3pm**

Would you like to be a part of a great team?  
Would you like to spend time in one of England's most prestigious and fascinating Gardens? Would you like to share your enthusiasm and love of history?  
Then come and volunteer for English Heritage at Wrest Park.  
Whether it's welcoming and chatting to visitors as a Meet & Greeter or sharing your knowledge of the garden as a Garden Steward or telling the stories of our unique house and garden as a Steward or Guide, there are plenty of ways to get involved here at Wrest Park, so come along to one of our open days and find out more about what's involved and how you can help our visitors. Step into England's Story.



# We Need Christmas Jumpers Please!



We are collecting  
**Christmas Jumpers**

to sell at our Christmas Fair on Friday 9<sup>th</sup> December!



Please donate any preloved Christmas Jumpers via the box in the school office – hopefully we will have a big collection for you to browse through at the fair!

**All sizes welcome!**

Thank you so much 😊





# Letter from the Vicar

**Richard Winslade**  
**The Vicarage, Shillington**  
☎ 01462-713311 [revrichardwinslade@outlook.com](mailto:revrichardwinslade@outlook.com)



## Dear Friends

My daughters both share a love of one particular popular Christmas music song. It is 'Santa Baby' by Eartha Kitt. For those who don't know it the verse is: "Santa baby, just slip a Sable under the tree for me. Been an awful good girl Santa baby, so hurry down the chimney tonight". It continues with requests for a 54 convertible, a yacht, a deed to a platinum mine, a duplex and checks, decorations from Tiffany and a ring (not on the phone).

The giving and receiving of gifts has, for a long time, been a central part of Christmas. The gifts we give and receive may not be as pricy as the list in 'Santa Baby' but they are all given with love.

The celebration of Christmas is all centred around the marvellous gift of the Christ child. A truly wonderful present giving with love. So, as we start to plan our Christmas shopping let us also consider our response to the gift given by God to us all.



In contrast to 'Santa Baby' my favourite carol is 'In the bleak mid winter' by Christina Rossetti. The final verse is 'What can I give him, poor as I am? If I were a shepherd I would bring a lamb; if I were a wise man I would do my part, yet what can I give him: give my heart'.

You would be most welcome to attend any of our Christmas services:

- \* 11<sup>th</sup> December 6:00pm Parish carol service
- \* 24<sup>th</sup> December 11:30pm Midnight mass
- \* 25<sup>th</sup> December 11:00am All Age Communion

**Richard**



# ALL SAINTS' CHURCH SHILLINGTON & GRAVENHURST

www.allsaintsshillington.org.uk



## WHAT'S GOING ON

### **OTHER SERVICES:**

- Holy Communion each Sunday at 9.30am with the exception of the 1st Sunday in the month when it's an All Age Communion Service. Both with live feed on Facebook.
- Sung Evensong is on the 1st Sunday in the month at 6.00pm.

### **CHRISTMAS & NEW YEAR SERVICES:**

- \* Sunday, 11<sup>th</sup> December - Parish Carol Service - 6.00pm
- \* Saturday, 24<sup>th</sup> December - Midnight Mass - 11.30pm
- \* Sunday, 25<sup>th</sup> December - All Age Communion Service - 9.30am.
- \* Sunday, 1<sup>st</sup> January - Joint Service for Christians in Shillington, Gravenhurst, & Stondon at the Congregational Church, Church Street, Shillington - 10.30am
- \* Sunday, 8<sup>th</sup> January - a combined Shillington, Gravenhurst & Stondon Service at All Saints Church, Shillington - 10.30am. Rev. Richard's last service with us.

### **ALL SAINTS CHURCH - SUNDAY SCHOOL:**

- ❖ 1<sup>st</sup> Sunday in the month, a Children's (All Age) service at the Church.
- ❖ 2<sup>nd</sup> Sunday in the month, a Zoom Meeting led by Adam Lockey, the Sunday School leader, using short Children's Bible films.
- ❖ 3<sup>rd</sup> Sunday in the month is Crafts in the Church from 9.30am led by Adam, plus a parent.
- ❖ We are open for children of all ages starting from 4 years old. For more information please contact **Adam Lockey** on **01462 712464**.

### **FUNERALS/BURIALS/THANKSGIVING SERVICES:**

- ✝ 25<sup>th</sup> October - Basil Charles Brewer – Burial of Ashes.

### **BAPTISMS:**

- ✝ 9<sup>th</sup> October - James William Howath.
- ✝ 23<sup>rd</sup> October - joint baptism of sisters Charlotta Joan, Lilly Marion & Grace Bethany Howath.
- ✝ 6<sup>th</sup> November - Cece Lucia Stratton.

### **200 CLUB – LUCKY WINNERS:** (prizes 1<sup>st</sup> £50, 2<sup>nd</sup> £25, 3<sup>rd</sup> £10)

#### **October 2022:**

1<sup>st</sup> no. 017 – Raffy Lovell    2<sup>nd</sup> no. 137 – Andrea Baulk    3<sup>rd</sup> no. 033 – Marco Cataldo

#### **November 2022:**

1<sup>st</sup> no. 137 – Andrea Baulk    2<sup>nd</sup> no. 017 – Raffy Lovell    3<sup>rd</sup> no. 130 – Mark Lambert

**OTHER NEWS FOR 2023:** Look out for details of our Quiz on Saturday 25<sup>th</sup> March – see page 25.

*Best wishes*

**Liz Brewer** (Church Warden) [lizbrewer313@gmail.com](mailto:lizbrewer313@gmail.com)

# CBC WARD MEMBER'S REPORT

for Shillington, Higham Gobion and Pegsdon

alison.graham@centralbedfordshire.gov.uk ☎ 01462-713543



Well, as you will know by now from Sally Stapleton's facebook post, Shillington need no longer worry about a huge 70 house estate being tacked onto the far end of Hanscombe End Road. After three attempts to get past CBC's planning department's refusals and an earlier DMC rejection, it was once again raised at DMC. And for three hours it was debated. (I can't say DMC doesn't go into detail; it does – repeatedly...) Why this determination to be approved?



It was the promise of a zero carbon estate, probably the first on this scale, in the country. And the idea appealed to high levels in CBC. After three hours it boiled down to a straight decision: the rules of CBC's Local Plan versus the promise of a dream. And my colleagues came good! 8 voted for refusal and only 4, in favour of approval.

This is not to say that CBC, like all councils, doesn't need bungalows, self builds and affordable housing; it obviously does. But a field at the far end of a Shillington 'end' is not the place to put them.

I have to thank Sally, and Mandy Sedge, for their contributions – but I must add Helen Smith, clerk to the parish council, for doing the research which gave me the details of other existing zero carbon attempts in England to use in my presentation– thank you, Helen!



To change the subject; I've very recently had a minor operation on my right hand - hence my first failure to attend the Remembrance Sunday ceremony. The nursing staff- mostly from the Philippines - were truly amazing; caring, professional, devoted – I got blessed so many times! But the conditions inside the NHS are deplorable, cancelled ops (mine), no beds (for me, and so many others) at all. Which brings me to social care.

The Local Government Association is urgently asking the PM to make good on Liz Truss's promise to provide £13 billion; this would enable local government to fund a good, adequately paid care service, thus enabling hospitals to send people safely back into their homes. It would be a good Christmas gift for all of us. But if a negative can be a positive, then Shillington can enjoy its own Christmas present - of a reprieved Hanscombe End Road!

For now, may I wish us all a relaxing and harmonious Christmas time.

Happy Christmas, *Alison Graham*



*Our Committee Members have been busy with plans for Christmas and would like to thank everyone who contributed to our recent Cake and Craft Stall. We would also like to thank all our supporters who helped to make this a great success!*

*Our Knitting Group met up in person for the first time having previously been meeting on zoom. We shared yarn, patterns and tips! Many brought things they had knitted for our Stall. Future projects were also discussed.*

*In November, we had Evan Willison visiting and giving his talk on "Tales from the Auction Room" and had us smiling at his stories. One of our Members correctly identified an unusual item hidden by Evan in a bag. It turned out to be a lamb feeder! Evan rewarded her with a bottle of wine!*



*Now we are looking forward to our December meeting when 30 members of the popular Phoenix Chorus will be coming to sing for us at our cheese and wine Christmas event.*



*Some Members will shortly be enjoying a trip to see the light show at Shuttleworth. In addition, our members are all invited to Discolicious for a lunch/supper alternative to cater for those who work and for those who prefer to come out in daylight hours! Lots of opportunities to get into the Christmas Spirit.*

*Plans are afoot for an interesting and varied Programme for 2023 and we welcome another 4 new Members to our WI this month.*

**We would like to send best wishes to all our members and supporters for Christmas and the New Year.**



***Our Meetings take place on the first Thursday of the month at the Congregational Church at 8.00 p.m.***

***If you would like further information or want to come along as a visitor (cost £4) please contact:***

***Myself: Jill Russell, Secretary on 01462 711533 or  
Julia Bruce, President on 01462 712412***



# PEACE, GOODWILL & HOPE

By Annie Palmer (*WI Ambassador for Climate Change*) [anniepalmer@hotmail.com](mailto:anniepalmer@hotmail.com)



It's Christmas, a season of peace, goodwill and hope. It's also a New Year with new beginnings and I feel that better times are ahead. There will be those who think that I believe in miracles. Maybe, but: "Everything is within your power, and your power is within you" (Janice Trachtman). We can make a difference. When I wrote the words "I believe in miracles" it rang a bell. It has just come to me - they come from a song by Hot Chocolate (its title isn't one that, when the penny dropped, I'd want to exclaim out loud in public).

My Chambers Twentieth Century Dictionary has been made redundant but it's still taking up three inches on the bookshelf as I'm reluctant to part with it. Nowadays if I can't spell a word or don't know something, I just say "Hey Google" to my phone, ask a question and up pops the answer – well, most of the time.

It was around the time of the RSPB and Wildlife Trust's angry response to the Government's attack on nature that I asked Google a question about the House of Commons. I must have been a bit indistinct as the answer wasn't the one that I was expecting. It was however an apt response - 'Tragedy of the Commons' appeared on the screen. I hadn't heard of this so I read on. Under the heading it stated: "The 'commons' is the cultural and natural resources accessible to all members of a society, including natural materials such as air, water and a habitable Earth (soils, forests etc). These resources are held in common even when owned privately or publicly". "The tragedy of the commons is a problem in economics that occurs when individuals neglect the well-being of society in the pursuit of personal gain. This leads to over-consumption and ultimately depletion of the common resource, to everybody's detriment. As the demand for the resource overwhelms the supply, every individual who consumes an additional unit directly harms others – and themselves too – who can no longer enjoy the benefits".



On a global stage, the greatest tragedy of the commons is climate change. The main actors in the tragedy are the fossil fuel, chemical and construction industries. They have a lot to answer for. The headline on the front page of The Guardian the day before the UN COP27 climate summit wasn't exactly uplifting. It said: "We will be doomed without climate pact, says UN chief" (Antonio Guterres). Mr. Guterres certainly doesn't mince his words - he's a straight-talking man with that rare ability to give a straight answer to a question. However, I'm an optimist. I feel that the number of people listening to and acting on the science is growing exponentially. The voices of those who are motivated by money and greed (who're trying to greenwash their way out of the situation) are, thankfully, getting weaker and easier to counteract. More and more of us are doing what is necessary. This is the reason why I'm not going around sounding like Private Frazer in the BBC sitcom Dad's Army whose catchphrase was "We're doomed".



Bob Marley once said that: "You never know how strong you are until being strong is the only choice you have". He also said: "Money can't buy life". He was a wise man. I often find myself singing: "Don't worry about a thing, 'cause every little thing gonna be all right!" (Three Little Birds. Bob Marley).

May your Christmas and New Year be filled with hope and strength, fun and laughter.

**Annie x**



## ALL SAINTS ILLUMINATED

To celebrate or commemorate your special occasion please contact:

**Catherine** on **07710-823384**

or e-mail [catherine.scleater@btinternet.com](mailto:catherine.scleater@btinternet.com)

*It only costs £25 to sponsor a whole week's illumination - a perfect way to commemorate a special family occasion or loved one's anniversary.*

Sponsor	Message	From	To
Ann, Andrew, Karen, Thomas & Family	<i>Anthony Paul Walker Remembering a dear husband, dad, grandad and brother on his birthday on 20<sup>th</sup> December, who died on 26<sup>th</sup> November 2021. With love from all the family. In our hearts forever.</i>	Sunday 18 <sup>th</sup> Dec.	Saturday 24 <sup>th</sup> Dec.
David & Fiona Howarth	<i>John Howarth Remembering your birthday on 22<sup>nd</sup> December.</i>	Sunday 18 <sup>th</sup> Dec.	Saturday 24 <sup>th</sup> Dec.
All Saints' Church Shillington	<i>Wishing everyone a peaceful Christmas and New Year.</i>	Sunday 25 <sup>th</sup> Dec.	Sunday 1 <sup>st</sup> Jan.23

## WARM HUB FOR SHILLINGTON.....

Following discussions with Revd. Angus, we're very pleased to be able to let you know about plans for a 'warm hub' for Shillington at the Congregational Church in Church Street. This will be opening up in the new year and plans are for a nice warm, friendly location for anyone wishing to come in from the cold.



Tea, coffee, hot soup and a roll will be available, as well as a friendly face and a chance for a chat, or even a hug if needed..... There will be no charge, however donations would be welcome to go towards supplies and Church heating.



Time to return to that earlier neighbourliness that we used to have around the village and were there for each other. We look forward to seeing old and new friends – please pop in when passing.

More details on when we will be starting this will be posted on the church notice board, village hall notice board and village facebook page for those who read that too.

Linda & Trish (and Revd. Angus)

## SHILLINGFEST 23

*Following the very special Diamond Jubilee event which we celebrated in June, every organisation involved felt we should continue this as an annual event and "Shillingfest" came to mind. It was agreed that this should be celebrated separately to the Coronation.*

*With this in mind we've now booked **24<sup>th</sup> June** (date associated with All Saints' Church annual village Fete) again at the Playing Fields for everyone to come together in celebration of our great community. We've already contacted the Classic Vehicle Group who will hopefully be able to join in and other village vehicle owners are very welcome to bring along their prize exhibits.*



*As well as food stalls, BBQ, Ice Cream Man and Morris Men, village groups will be able to show what they get up to and encourage new members. Individual stall holders/craft folk/village businesses most welcome to have a stall to show off and sell their wares. More details to follow as this gathers pace.*

*Our next meeting will be at the Social Club on Tuesday, 10<sup>th</sup> January 2023 at 8pm. Contact **Sally S (07711-504489)** or **Gavin (07826-518667)** if you would like to be involved.*

## SHILLINGTON WIVES GROUP

*The Wives Group have enjoyed the first half of the 2022/2023 session.*

*In September we were pleased to welcome several new members. We commenced the session with a Social afternoon to welcome back old & new members. We held a Bring & Buy table to raise funds for the Group. After catching up with other members after our summer break a light buffet was enjoyed.*

*In October members took part in a Workshop 'An Introduction to Macrame' with Jayne Saunders. All members did their best to complete a Macrame keyring.*

*In November our booked speaker had to cancel and so one of our members - Maureen Karlake - gave a very interesting talk on 'Wrest Park'.*



*Our last meeting will be our Christmas outing in December which Val is organising. We return to our meetings on 12<sup>th</sup> January 2023 for our New Year's Party.*

*We are always ready to welcome any ladies who wish to join us as a visitor and hopefully as a member.*

**Contacts: Pauline (711711) or Janet (711402)**



## VIRGIN BIRTH

*by Revd. Angus McCormick* ☎ 01462-712096  
Minister of Shillington Congregationalist Church

Nothing shocks us so much as those appeals for helping children in need whether it's hunger or violence or disease; just as the senseless killing of children by a criminal mind. Child abuse is a phrase in common usage sadly in our times. At this season of celebration of the birth of Jesus Christ so many children are so wrapped up with presents and decorations that any message is missed.

Many years (52) ago when I trained as a minister of religion it was revealed by language scholars that the word for 'virgin', on which so much has been built in Christian tradition, was properly translated as 'young woman'. So it has become essential to believe in a virgin miraculous birth for most Christians. Of course many people on learning this have decided not believe in such a birth and have built up their own antagonism to a Christian faith accordingly.

However, a baby was born in Bethlehem and grew up in Nazareth in Palestine. The stories around this birth show a homeless family and a struggle within violent times where there was an occupying army. Eventually the baby grew up to lead a life of service and sacrifice; a good life of helping others voluntarily, and an appeal for forgiveness and reconciliation among the races and religions of the day. All of which I think is good enough cause for us to rejoice and celebrate at his birth. Much indeed has been added to the story such as Santa Claus and all the appeals around that story - for better or worse.



The birth of any baby is a miracle and something we all must cherish. It is not to be taken for granted even in today's modern health service. I know that within my own family. Sleepless nights, nights when bombs went off, when an ambulance had to find its way through bombed power stations, when access to the hospital was denied by terrorists.

Let us renew our joy then at all births and work towards nourishing a good upbringing for all children to become adults, who will practice the love of neighbour and reconciliation in relationships that were evident in the life of that adult Jesus Christ.



Away in a manger ... In lands at home and abroad in today's world there is a greater need than ever for love in relationships and in bringing up children. Places where children are living in war zones and drought, in broken families ... corrupted by scams and evil minds.

Suffer the little children to come unto us for of such is the kingdom of blessedness and love.

Every blessing,  
Rev. Angus



# CONGREGATIONAL CHURCH NEWS

47 Church Street, Shillington  
[www.shillingtoncong-church.org.uk](http://www.shillingtoncong-church.org.uk)

## SERVICES:

All services commence at 10.30am unless otherwise stated. Should you need to contact our Minister with any enquiries his telephone number is 01462-712096.



## COFFEE MORNING:

The Coffee Morning held on Thursday, 27 October was well supported and thank you to all those who attended this event. The sum of £65 was raised for Keech Hospice.

## REMEMBRANCE SUNDAY:

The church was just about full for the Remembrance Day Service. The collection amounted to £308-58 for the Royal British Legion.

## BEDFORD FOODBANK:

Demand on the foodbank is greater due to the current economic situation. Thanks to the generous donations made by the local community, regular deliveries continue to be made to help those most in need.



Items may be left at 1 Bells Close or at the church when open. Thank you.

### *Items currently in short supply:*

Tinned Meat	UHT Fruit Juice	Long Life Sponge Puddings
Tinned Vegetables	Coffee 100gm	Boxes of Chocolates
Tinned Fruit	Soap	Chocolate Selection Packs
UHT Milk	Washing Up Liquid	

## CHRISTMAS TREE FESTIVAL:



The Christmas Tree Festival is being held over the weekend – see poster on page 20.

Closing carols at 5.00pm followed by drawing of the raffle on Sunday, 4<sup>th</sup>. We have the local Wives Military Choir attending on the Sunday afternoon to sing for us. All donations to be given to the charity 'Blood Runners' – Beds and Herts Group.

## PROJECT:

The church is looking into a project to offer a WARM PLACE in the building early in the new year. Further details will be available soon.

# SHILLINGTON MEN'S CLUB

(Now in its 18<sup>th</sup> year)

On the evening of the 12<sup>th</sup> October 17 members returned to the Crown at Willington having previously been there in May. Members tucked into fish & chips or pie & mash, followed by a sweet of crumble and custard or spotted dick. A good night was had by all. Thank you to Colin Smith for organising this event.

On the 19<sup>th</sup> October 8 members and some partners enjoyed a day at Newmarket races for the two year old meeting. It was a beautiful autumn day and we were treated to some good races with some tight finishes. One of our group was extremely lucky (not saying who) who got four winners and two each way bets up. Perhaps we should have followed him from the beginning! Anyway most members enjoyed their day.



On the evening of the 9<sup>th</sup> November 23 members attended a meal at the White Heart at Flitton. Members enjoyed a meal of bangers & mash with onion rings and gravy or cottage pie and vegetables or a plate of pasta. This was followed by a superb ice-cream sundae or the most delicious homemade apple pie and custard yum yum! All this was washed down with copious amounts of good real ale or vino. This turned out to be one of the best meals we have had all year. Thank you to Colin Smith for organising this event.

On the 23<sup>rd</sup> November 10 members attended an afternoon social outing to the Ibos Turkish restaurant in Hitchin. The food was excellent as was the ambiance of the place. Thank you to Michael Bradley for organising this event.

We are now all looking forward to our annual Christmas Party meal at the golf club in Lower Stondon, 34 members have already booked their place! It should be quite a night and I am assured Santa will be in attendance!



## Future Events:

- ❖ 14<sup>th</sup> December - Christmas Dinner at the Golf Club, Lower Stondon.
- ❖ 1<sup>st</sup> February 2023 - Annual General Meeting at the Congregational Church.

## Membership:

Remains stable at 42 members. There are 8 elected Committee members who meet every 12 weeks to review and evaluate past events, plan future events and review the Club's Finances. The Club offers members a bi-monthly opportunity to socialise and enjoy friendly conversation and comradeship over a good pub meal and beverages or a visit to a place of cultural or historical interest. This is the essence of the Club.

New members are warmly welcomed, so any new residents to the village, please take the opportunity to embrace village life, meet local people and come along and see what the Club has to offer! Membership is £5 to join with an Annual Membership of £15.

## Contacts:

**Events Co-ordinator - Michael Bradley**  
(01462 711162)

Email - [michael894bradley@btinternet.com](mailto:michael894bradley@btinternet.com)

**Chairman – Kevin Johnson**  
(01462 712768)

Email – [kevinjohnson360@msn.com](mailto:kevinjohnson360@msn.com)

# SHILLINGTON SHORT MAT BOWLS CLUB

MEET AT

## SHILLINGTON VILLAGE HALL

Monday afternoons – 2.00-5.00pm // Friday evenings – 7.00-10.00pm



### **Quarter Finalists in Pairs Competition – three members of SSMBC**

*In October thirteen members of Shillington Short Mat Bowls Club took a week's Bowls Holiday down in Torquay. A good time was had by all with members taking part in Singles, Pairs and Triples Games.*

*As you can see from the picture above three members of our Club made it into the Quarter Finals with the help of Richard Kitchener a player from Derbyshire (pictured above with Julia). Paul & Julia Bruce then qualified for and won through to the Semi Finals.*

*We are now looking forward to our annual Christmas Social where 29 of us will be getting together for an enjoyable evening at The Cross Keys in Pulloxhill.*

*Our Internal Triples League is in full swing with games taking place on a Monday afternoon and Friday evening. Three teams are involved in the Barnet League. Also on 20<sup>th</sup> November members from Shillington took part in a qualifier round for the Over 55's Pairs National competition. Further qualifying rounds will be taking place over the next few weeks and we hope that some members of Shillington Short Mat Bowls will be successful in either qualifying for County and/or National competitions.*

*We have members in the Hertfordshire Team in the Inter County Championship with the next game taking place on 4<sup>th</sup> December against Suffolk at home. Currently two games have taken place with Hertfordshire winning one away to Suffolk and drawing the other against Northamptonshire.*

*Short Mat Bowls is a fun game, as well as a competitive sport but you can meet and make some good friends in the process. Taking part in National and/or Hertfordshire County Games is only part of the picture and we always welcome new members. Experienced members provide support and guidance for new and developing players and members can join in with regular County playing and learning activities at the County venues in Hatfield and Potters Bar.*

*For further information please contact*

**Derek Lewison (01462 711504) or Jeanette Waller (01462 622737)**



## HOLDING ON..... TO OUR PRECIOUS CHURCH ON THE HILL



It was great to see the church full and in good voice for the recent 'Grease' singalong film night – a huge thank you to everyone who supported it and helped to raise over £1000 towards the maintenance costs of our 14<sup>th</sup> century church. (The roofers will be back shortly fixing new leaks!).

Over the centuries the church has been a focus for social as well as religious gatherings and long may it continue!

The event was ably organized by Lily Telstar as part of her Gold Duke of Edinburgh Award volunteering. Lily also took the opportunity to invite donations to Breast Cancer UK in memory of the star of the film, Olivia Newton John, which raised another £107. Thank you Lily!

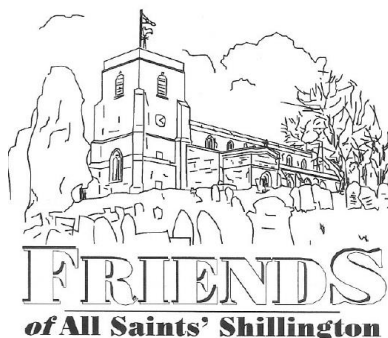


The Friends Committee are once again putting up a big Christmas Tree in the memorial garden next to the village hall, for everyone to add their own decorations – do join in the festive fun with your own creations! In the spirit of Christmas, donations will be invited to **Herts Young Homeless** to support young people for whom Christmas can be a particularly difficult time. See the poster and QR code in this magazine (page 21), by the tree and around the village.

The tree will be 'window number 24' in the Shillington Street Advent Calendar - look out for the 24 houses/sites around the village which will be lighting up a window for each day in December.

Looking ahead to the New Year there is a date for your diary – February 4<sup>th</sup> the 'Shillington Gold Cup' Race night returns to the village hall – see the poster on page 24.

If you'd like to donate, join the Friends or to find out more you can use the form on the next page.



With best wishes for Christmas and the New Year,

Peter Lambert  
Friends of All Saints Church  
pglambert@fastmail.com



If you would like to make a donation and receive regular updates on the work of

## **Friends of All Saints' Church, Shillington**

### **THERE ARE 2 EASY WAYS TO PAY:**

#### **1. You can make a donation by cheque/post**

I/we enclose a donation of £..... to Friends of All Saints' Church, Shillington for the current year.

Name .....

Home address .....

.....

email address .....

I would like Friends of All Saints to be able to reclaim tax on my donation (see below):

(Yes / No) (Please delete as appropriate)

Signed..... Date .....

Please return this form, signed, together with your donation, to the Membership Secretary of Friends of All Saints' Church:

**Joy Robertson, 18 Vicarage Close, Shillington SG5 3LS**

Or

If you'd prefer to pay online:

**HSBC, Friends of All Saints Church, sort code: 40 24 20, a/c No. 71596985**

**How we can ADD 25% to your donation.** Under tax legislation, the Friends can recover some of the income tax you pay on any of your taxable income. In allowing us to recover this tax, you must have paid, or be due to pay, an amount of income tax at least equal to that we will be able to reclaim on your donation, this being 25p for every £1 you give.

In order for us to reclaim this very valuable bonus to our income, you need do nothing at all except sign and tick the box above to confirm that you are a taxpayer. We thank you in advance if you are able and prepared to do this.

Alternatively, donations can be made via the QR code below.



## RAMBLING ON with DEREK TURNER

☎ 01462-712462

[derek.turner@phonecoop.coop](mailto:derek.turner@phonecoop.coop)

Making the history of Shillington, Pegsdon and Higham Gobion interesting and readable for the new website (launching in the spring) has kept me occupied during the last 15 months. I had been compiling information for a long time before that but sorting through it, researching additional material, and making it fit the available space has kept me busy until recently. With a sense of relief, I dispatched the final section in mid-November to the expert who is putting it all together.

Dealing with the period when I was young in the 1950s was particularly interesting as I was able to compare my life with those of Shillington boys and girls. I've written previously about being raised in Cromer, a small hamlet about the size of Pegsdon but situated 10 miles from Hitchin on its far side. It seemed extremely remote at the time and I expect that some older residents felt the same about living here as youngsters.

I'd suffered with many winter colds until I was seven but this changed after my tonsils were removed in the old Lister hospital in Hitchin. I remember tucking into a bowl of ice cream - a rare treat in those days - before I went home. My health was generally excellent after that although my love of sweet things would cause problems later. Adults often handed out sweets which was, I suppose, a reaction to the wartime deprivations that they endured. From the age of eight, I received pocket money and bought what in those days was a large bar of milk chocolate every Friday on the way to school. It had all gone by lunchtime.



Shillington children had opportunities to buy sweets too. The legendary Fanny Cole's sweetshop near Apsley Arch had gone by then but Mrs Wilmer ran High Road Stores (which stood near the current shop and post office). There were rows of large glass jars containing sherbet pips, rainbows drops and all sorts of other sweets which she weighed out and sold in little paper bags. Inevitably, my sweet tooth meant I needed fillings at a time when anaesthetics weren't so good as they are now. Other painful episodes in my otherwise happy life included vaccinations, wasp and bee stings as well as the shocks from electric fences designed to keep cows in fields and boys like me out.

While most Shillington children were walking to school, I boarded a school bus which then embarked on a lengthy journey along narrow, twisting lanes to pick up children from far-flung farms and hamlets. One day on the straightest and fastest section of road, our journey was enlivened when we ran over a hapless chicken that had chosen to cross at the wrong moment. Feathers flew everywhere. The driver stopped, got out, picked it up and dumped it on the floor beside him. His family were treated to a cheap meal at the farmer's expense.

During the first and second world wars, many would-be soldiers were found to be unfit to serve due to their poor diets. To remedy this in future, the post-war government introduced free milk for all school children in 1946. I clearly remember drinking from the stubby glass bottles containing one third of a pint (about 190ml) during the morning break. In Shillington, Bert Simkins delivered it to the school.

In its exposed position on the brow of the hill opposite the church, it was difficult to heat the school rooms buildings adequately in the depths of winter. There had been times when teachers and pupils were forced to use the village hall instead. At the back of the playground were outdoor toilets with wooden seats and buckets below.

It took a concerted campaign by parents for the last of the children to be moved to the new school with its modern facilities in 1972.

My school also had outdoor toilets but reaching them required a long walk to the far end of the headmaster's garden. Taking a leak entailed passing his leeks and all the other crops. It was no fun when it was raining hard on a bleak winter's day and to compound the misery, the boy's urinal didn't have a roof. Its condition had not altered since my father had been a pupil there in the 1930s. Gardening was on the curriculum in those days which meant that he and the other boys had to dig the headmaster's vegetable patch. After the contents of the buckets had decomposed for a few years, they were spread on the soil to improve its structure and fertility. The vegetables that the headmaster ate must have been large and tasty.

Shillington was a larger school than mine. It had four classrooms while mine had two and a wider range of subjects were covered. Mr Moore taught his children to sight-read music and



payment of a small fee bought you piano lessons with Mrs Wilson after school. She also played the organ in the Methodist chapel where she's remembered for thumping out a rousing rendition of 'The old ragged cross'. Mrs Harris taught country and Scottish dancing. There was a maypole in the playground and by Mayday, the girls were proficient at dancing round it and tying the ribbons together as the May Queen, her attendants and other pupils looked on.

The children of today have opportunities that we post-war kids missed out on but I see the pressure they are under from social media, assessments and exams at school and high expectations from their parents. I wouldn't swap my childhood for theirs. I could wander off without my parents asking where I'd be. I made dens under bushes, climbed trees and went for long walks, returning home only when I was hungry. I had plenty of time to let my mind wander, explore and be creative. What I did miss though, living in a place where I was the only child of my age, was company. There were occasional birthday parties but the British Legion's Christmas party was spoiled by its chairman who did nothing to help but went round bursting balloons behind your back with his lighted cigarette. I doubt that this happened at the 1957 High Road Methodist Sunday School Christmas Party (pictured). If you're attending a seasonal party this year, I hope you enjoy it and there aren't any unexpected loud bangs.



I owe many thanks to Jenny Hyde and Val Fiore for their reminiscences in 'We used to leave our doors open'. Shillington Women's Institute produced it in 2002 following interviews with residents and it's worth borrowing, begging or stealing a copy if you don't have one. The pictures were donated to the village collection of old photos by David Mott and Janet Hills.

# SHILLINGTON CONGREGATIONAL CHURCH



## CHRISTMAS TREE FESTIVAL 2022

- \* **Friday, 2<sup>nd</sup> December** - **3.30pm - 5.30pm**
- \* **Saturday, 3<sup>rd</sup> December** - **1.00 - 5.00pm**
- \* **Sunday, 4<sup>th</sup> December** - **1.00 - 5.00pm**

**THE CHICKSANDS & HENLOW MILITARY WIVES CHOIR**  
will be singing at our  
**CAROL SERVICE** from **5.00pm** on **SUNDAY 4<sup>TH</sup> DECEMBER.**

Refreshments available throughout the festival.

Chosen charity this year is:  
**BLOOD RUNNERS, BEDS AND HERTS GROUP.**

If you would like to help in any way, or would like more details,  
contact **Nola McCormick** on **01462 712096.**



# FRIENDS LIGHT UP SHILLINGTON FOR CHRISTMAS



**BRING YOUR OWN  
DECORATIONS AND  
HANG THEM ON THE  
TREE IN THE  
MEMORIAL GARDENS**

**DONATIONS  
WELCOME TO 'HERTS  
YOUNG HOMELESS'  
HELPING HITCHIN'S  
16-24 YEAR OLDS IN  
DIFFICULTY AT  
CHRISTMAS**

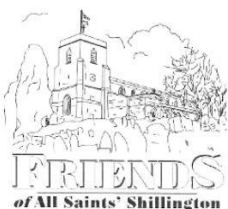
**COME ALONG AND  
HANG YOUR OWN  
DECORATIONS AT  
ANY TIME FROM 3RD  
DECEMBER (HOME  
MADE WELCOME)**



**THE FRIENDS OF ALL SAINTS' CHRISTMAS TREE WILL BE UP  
IN THE MEMORIAL GARDENS BY THE VILLAGE HALL FROM**

**3RD DECEMBER UNTIL 6TH JANUARY**

**IF YOU WISH TO DONATE TO HITCHIN YOUNG HOMELESS ONLINE VIA THE  
FRIENDS OF ALL SAINTS CHURCH 40-24-20 A/C 71596985  
OR DIRECTLY VIA THE QR CODE**



**THE TREE IS PROVIDED BY THE FRIENDS COMMITTEE AND PLACED  
HERE BY THE KIND PERMISSION OF THE PARISH COUNCIL**



*All Saint's  
Church Presents*

# Christmas Fayre

**Saturday 3rd  
December**

**Shillington  
12:00pm – 3:30 pm**

**Food served from 12:00pm**

**Mulled  
Wine**



**Games**

**Stalls**



**Raffle**







Made with

# SHILLINGTON LOWER SCHOOL CHRISTMAS FAIR

9th  
DEC

3:30PM - 5:30PM

FOOD - GAMES GALORE - CRAFTS - SANTA'S  
GROTTO - STALLS - MUCH MORE



# BLIND LEMON

**ARE YOU READY TO PARTY**

**LIVE AT  
SHILLINGTON SOCIAL CLUB  
SAT 17th DECEMBER**



**SIX PIECE LIVE BAND - SOUL - SKA - 80'S -90'S -00'S**



# SHILLINGTON GOLD CUP RACE NIGHT

4th February at 19:00

Shillington Village Hall

Includes supper

Bar at the venue

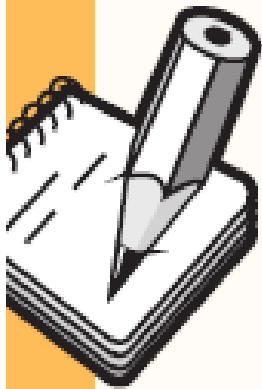
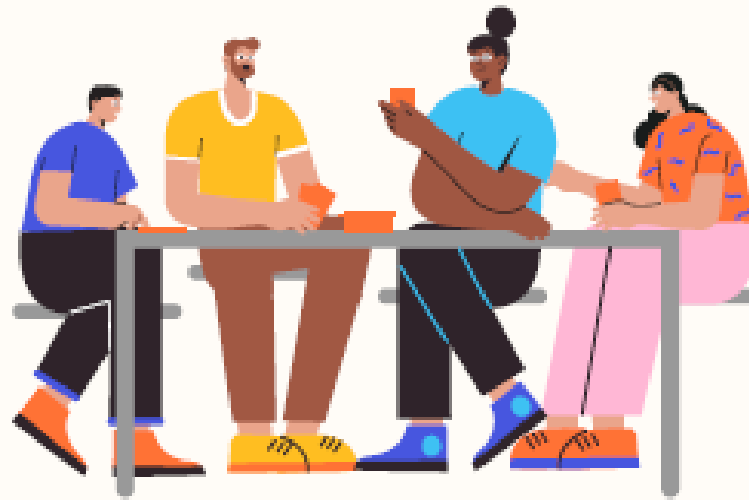


This is a 'Friends of All Saints'  
event raising funds to help repair  
and maintain the church building

Tickets £10 from Denise Randall 07414513683  
& Peter 01462 712576



ALL SAINT'S PRESENTS



# QUIZ NIGHT

EVERYONE  
IS INVITED  
TO JOIN

Saturday 25th March 7.30  
at Shillington Village Hall

**Tickets £10**

For tickets, please contact:

Liz 01462 713978

Denise 07414513683

**SUPPER INCLUDED**

**RAFFLE TICKETS ON THE NIGHT**

**BRING YOU OWN DRINK  
AND GLASSES**





# Shillington Baby & Toddler Group



We have a new team leading Shillington Baby & Toddler Group this term, but we still need additional volunteers to ensure the Group can continue to run each week. This doesn't need to be a week-in, week-out commitment! Ideally we'd like to have a pool of helpers who can commit to helping, e.g. once a month.

If you are interested and would like to know more, please email us at [shillingtonbtg@outlook.com](mailto:shillingtonbtg@outlook.com), message us on Facebook (@Shillingtonbabyandtoddlergroup) or come and chat to us at one of our Friday morning sessions in the Village Hall (9.30am - 11.30am in school term time).

 Find us on  
Facebook

Registered Charity 1054966



## The Governing Board of the Shillington and Stondon Federation

has vacancies for co-opted governors



### Could you make a positive contribution to the local schools?

Being a governor is a rewarding way of making a voluntary contribution to the lives of local young people. The Shillington and Stondon Federation is looking for new governors to join our team.

#### **We would be delighted to hear from anyone who has:**

- an interest in the performance of the schools
- an open and enquiring mind and the ability to look at issues objectively
- the confidence to ask questions and join in debate
- a willingness to listen and make informed judgements
- the ability to work well with others
- some time to spare (4 full board meetings per year held 7pm midweek, plus 4 to 5 committee meetings, visits to school and training)

#### **We are also looking to fill the Health and Safety Link Governor role**

Being a governor can be enjoyable, stimulating and rewarding and you do not have to be the parent of a child at either school. All governors must complete safeguarding checks.

If you are interested, please contact Laura Forgham, Clerk to the Governors [lauraforgham@shillington.cbeds.co.uk](mailto:lauraforgham@shillington.cbeds.co.uk) by **16<sup>th</sup> December 2022**.

More information about the Governing Board can be found online at <https://www.shillingtonstondon.co.uk/web/governors/553524>



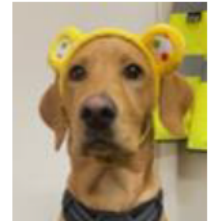


We are having a busy start to our first term in this school year. Our Year 4 class had a fantastic trip to Grafham Water Centre in October. The children showed so many values while away, determination, resilience, friendship, and teamwork were just a few. They made shelters during bush craft, showed courage climbing the high ropes, braved the choppy water in a powerboat and tested their aiming skills with archery. Each child challenged themselves to try everything, and we were so proud of them.

We have once again joined with our Federated school, Stondon Lower, for our annual joint remembrance service and during the assembly the children took part in a minute silence to remember those who have served and to say thank you to those who protect us and keep us safe. We then laid a wreath at the War Memorial on behalf of our school after the service at the Congregational Church on the 13<sup>th</sup> November.

During week commencing 14<sup>th</sup> November we supported Anti-Bullying week, and, on the Monday, we wore odd socks to school to encourage everyone to celebrate their individuality and all our uniqueness. We have been learning all about Anti-Bullying in our classes and in assemblies throughout the week.

We also supported Children in Need during the same week and wore our pyjamas or non-uniform to school. Even Parker, our school dog, joined in!



We are looking forward to our Christmas events in school which will include parties, our school Christmas lunch, a puppet show for the children, class performances, and a carol concert for our parents.

Remember, there is still time to apply for starting school with us in September 2023. If you, or you know of anyone who is looking for a place for your child in September 2023, then give us a call to arrange a tour of our fabulous school. Applications are now open via the CBC website and will remain open until 15<sup>th</sup> January 2023. We also have some places available across the year groups and warmly welcome any new families and pupils who may be looking to move schools. If you are looking for a pre-school place, please contact the school office for more information about how to secure a place in Pixies class where we are currently planning for our January starters.



# PIXIES Pre-School



***FOR LITTLE LEARNERS WITH BIG IDEAS!***

Pixies Pre-School is run and managed by the school, we take children from 2 years until they start in Reception class, and we work closely to provide a smooth transition into school.

Children can start in Pixies class when they are ready to be in a pre-school environment.

We offer:

- ☺ A vibrant and fun classroom
- ☺ Qualified, dedicated, and experienced staff
- ☺ Fantastic outdoor area providing stimulating learning experiences
- ☺ We provide a range of imaginative and stimulating learning activities
- ☺ 15 & 30 hour funding

Come and see our fantastic new building. Tours are available, contact the school office.



## Outdoor Explorers

Outdoor Explorers is our Monday morning adventure where we encourage all children to appreciate the natural world whilst developing their confidence, self-esteem and help create more independent learners inspiring our children about the great outdoors.

The sessions are run outside on the school field by our staff, come rain or shine.

Limited spaces are available.  
Please contact the school office  
for more information.

For more information, please contact us at:

**Shillington Lower School**

Greenfields, Shillington, Nr Hitchin, SG5 3NX

Tel: 01462 711637 Email: [office@shillingtonlower.co.uk](mailto:office@shillingtonlower.co.uk)

[www.shillingtonstondon.co.uk](http://www.shillingtonstondon.co.uk)



# CHRISTMAS IN THE GARDEN by Donna Cameron

**Donna's Garden Designs - ☎ 07833-670934**

December is such a busy month so wrapping up and spending some time in the garden is always welcome! Getting away from the hustle and bustle of shopping and cooking and taking a breather!

Take some secateurs with you and collect some greenery and some berries. With them you could make -

**An Informal Door Hanging:** Bunch the collected pieces together with some string and then some festive ribbon. Simple, but effective, Creating a warm welcome for any visitor! *Or*

**Make a traditional wreath:** These were first introduced in Germany in the 16th century when Christmas trees were brought indoors at Christmas. The off cuts were then used to make wreaths for doors. The circle is symbolic as everlasting as the circle has no end and the Evergreens also signifying everlasting life and strength. Use copper wire to fasten the sprigs together to create your circular shape then wind in more greenery and decorations, building it up as much as you want and hang with a ribbon.



**Deck the Halls!:** Adorn some greenery on mantelpieces and window sills with some Christmas decorations dotted in between and some battery lights. You could go for a Woodland theme with Reindeer and pine cones or perhaps some brightly coloured baubles.

**Poinsettia:** Widely available at Christmas due to their festive colours of red and green. Many people make it part of their Christmas tradition to get one to enjoy in holidays. Originally the plants come from Mexico and Central America so water sparingly and mist regularly.

**Christmas Trees:** If buying a real one make sure it has a root ball attached so you can re-plant after Christmas or buy one from somewhere that grows them sustainably.

**Good Greenery to use:**

- ☼ Fir ☼ Holly ☼ Ivy ☼ Rosemary ☼ Eucalyptus ☼ Old man's Beard ☼
- ☼ Dried Hydrangea flowers ☼ Seed heads ☼ Fir cones ☼ Rosehips ☼

## JOBS IN THE GARDEN FOR DECEMBER

* Insulate Taps	* Prune Acers, Vines and Birches	* Feed the Birds and ensure they have water
* Prune Apple & Pear Trees	* Harvest Leeks, Cabbages and of course Parsnips and Sprouts!	* Await Spring Bulbs and keep eyes peeled for Hellebores and Snowdrops
* Check any vulnerable plants are protected	* Make a Christmas Wreath	
	* Buy a Poinsettia	



Central  
Bedfordshire



# Are you struggling with the cost of living?



As the cost of living increases, it's important to be aware of the benefits, payments and support options available. There is local and national support that can help with things like rent, food, bills and wellbeing.

Find out more at [www.centralbedfordshire.gov.uk/cost-of-living](http://www.centralbedfordshire.gov.uk/cost-of-living)

**Cost of living support**





# CENTRAL BEDFORDSHIRE COUNCIL

## GARDEN WASTE COLLECTIONS – DECEMBER & NEW YEAR

Central Bedfordshire Council (CBC) have advised that there will be a break in garden waste collections again this winter. Collections will be suspended **for 12 weeks from Monday, 5 December 2022 until Friday, 24 February 2023 inclusive**.

Residents are encouraged to check the last collection date for their area, which will be either the week commencing Monday, 21 November or week commencing Monday, 28 November. The collections will resume on Monday, 27 February 2023 or Monday 6 March. All other waste collections will operate as normal.

During the break, garden waste can still be recycled at CBC's four Household Waste Recycling Centres which are open seven days a week from 9am to 5pm, including bank holidays. Further details, including the opening times over the Christmas and New Year period can be found on CBC's website: <https://www.centralbedfordshire.gov.uk/tidytips>. More information on changes to garden waste collections can be found at: <http://www.centralbedfordshire.gov.uk/garden-waste>.

### CHRISTMAS 2022 CHANGES TO COLLECTIONS for SHILLINGTON PARISH:

Usual collection day:	Revised collection day
Wednesday, 28 December	Thursday, 29 December

### NEW YEAR 2023 CHANGES TO COLLECTIONS for SHILLINGTON PARISH:

Usual collection day:	Revised collection day
Wednesday, 4 January	Thursday, 5 January

You'll be back to your usual collection day from **Monday, 9 January 2023**.

### EAT, RECYCLE AND BE MERRY:

Place Christmas cards, wrapping paper and cardboard packaging in your kerbside recycling bin (but not those containing glitter, foil or plastic).



Gone as far as you can with Christmas leftovers? Scrape them into your food waste bin.

All reusable textiles, small electrical appliances, and household batteries can be recycled separately. Place them in a standard-sized unwanted carrier bag and leave them next to your bin.

### RECYCLING CHRISTMAS TREES:

Leave your real tree next to your recycling bin, on your normal collection day, between **Monday, 9<sup>th</sup> January and Friday, 20<sup>th</sup> January 2023**.



# VILLAGE FACILITIES

## SHILLINGTON SOCIAL CLUB

*Greenfields, Shillington*

☎ 07826-518667 (Gavin)



### Current Opening Times:

- ★ Mondays: 7.30pm-11.00pm ★ Fridays: 7.30pm-11.30pm ★
- ★ Saturdays: 12 noon - 8.00pm ★ Sundays 12 noon-8.00pm ★

⇒ *Licensed bar with variety of beers, wines and spirits at social club prices – £1 a pint less than most pubs.*

⇒ *Regular monthly live music and fund raising events and a great pool table.*

⇒ *Cappuccino, Latte & Hot Chocolate available*

Don't forget to look out for updates on the Shillington Village & Shillington Social Club Facebook Pages.

### Licensing Policy:

Children aged 16 and under are welcome with an appropriate adult until 9pm on any day we are open

### **Social Club Committee**

## SHILLINGTON VILLAGE HALL

All enquiries please contact:

the **BOOKING CLERK** on ☎ 07376-682935

e-mail: [shillingtonvillagehall@yahoo.com](mailto:shillingtonvillagehall@yahoo.com)



*Large Hall - Stage - Small Meeting Room - Kitchen & Bar Facilities - Disabled Access & Toilet.*

- ★ **Children's Parties** ★ **Discos/Dances** ★ **Meetings** ★ **Toddler Groups** ★
- ★ **Indoor Bowls** ★ **Exhibitions** ★ **Circuit Training** ★ **Karate** ★

The Car Park (when not in use by hall bookers) can be hired for events where village parking is limited.

*The Village Hall Committee would politely request residents making use of the Car Park for overnight parking to please note (see booking sheet on Notice Board) that Hall Hirers take priority for parking for their bookings, if you could ensure you are not occupying the car park during these times.*

Thank you ☺



## SHILLINGTON CHILDMINDERS

*Childminders provide safe, friendly home environments for children to play and have fun whilst gently learning through their play. We take children on outings to farms, play centres, splash parks, museums and libraries, as well as teach them life skills such as helping to do shopping, gardening and cooking.*

*We are registered with Ofsted, have public liability insurance, follow the Early Years Foundation Stage curriculum, undertake regular training including Safeguarding and First Aid and receive regular newsletters and bulletins from professional organisations.*

*We meet up at least once a week to provide children with the opportunity to learn social skills and experience different play resources. The children get to know all the childminders and children which enables us to offer the ability to cover holidays and other absences for each other.*

*Some of us are able to provide up to 15 hours of free childcare a week for eligible 2 year olds, as soon as care starts, in the same way that nurseries and pre-schools can. We are also able to provide the free sessions for all 3 and 4 year olds; at least 15 hours per week up to 30 hours per week (for 38 weeks of the year) depending on parental eligibility and the childminder's policy.*

*The free sessions normally start the term after the child's 3rd birthday. There may be additional charges to cover e.g. food and outings.*

*We each have differing childcare availability such as before and after school care, daytime childcare, overnight childcare, ad-hoc care or flexible care e.g. for shift workers.*

Please contact us as below, or via Shillington Childminders on Facebook, if you have any childcare requirements for now or the future

Laura Forgham 01462 713638 <a href="mailto:lauraforgham@btinternet.com">lauraforgham@btinternet.com</a>	Katie Brettell 01462 713054 <a href="mailto:katiebrettell@icloud.com">katiebrettell@icloud.com</a>	Deb Pateman 01462 338304 <a href="mailto:debpateman@msn.com">debpateman@msn.com</a>
Carli Mauger 07912 549931 <a href="mailto:carlimauger@gmail.com">carlimauger@gmail.com</a>		Laura Griffiths 07493 903621 <a href="mailto:lauralgriffiths820@gmail.com">lauralgriffiths820@gmail.com</a>

# PLANNING APPLICATIONS

## **DECISIONS from CENTRAL BEDFORDSHIRE COUNCIL:**

**CB/22/03104/VOC** – Apsley House, 2A Apsley End Road

Variation of condition number 3 of planning permission CB/22/01000/FULL (Installation of new vehicle gates, raising of patio levels, landscaping, ramps, boundary treatments, erection of garden studio building and associated works). Alteration of the approved plans to include an altered proposed garden outbuilding, boundary fence and walls, vehicle gates and garage door configuration.

**GRANTED 21/09/22.**

**CB/HDG/22/00468** – Section of land running between Flitton and Meppershall. Hedgerow: removal of 21 sections of 5m of hedgerows to facilitate access and installation of drinking water pipeline by Anglian Water. Installation between Flitton (E:505257, N:236487) and Meppershall (E:513516, N:235542) all hedgerows will be replanted like-for-like or improved.

**HEDGEROW PROHIBITION OF REMOVAL 19/10/22.**

**CB/TCA/22/00486** – 91 Church Street

Works to trees within a Conservation Area: Crown reduce Mulberry tree by up to 3m to viable growth points (1) and fell Sycamore tree to ground level (2).

**RAISE NO OBJECTIONS 13/10/22.**

**CB/22/03224/FULL** – 17 Upton End Road

New self build 4 bedroom dwelling.

**REFUSED 27/10/22.**

**CB/22/03536/VOC** – Chiltern View, Higham Road, Higham Gobion, MK45 4RB.

Variation of condition number 2 of planning permission CB/21/04807/FULL (Erection of an agricultural barn) – The approved structure shall be used only for agricultural purposes and any other use considered in the countryside.

**REFUSED 31/10/22.**

**CB/22/03609/LB** – 4 The Bury, Upton End Road.

Listed Building: Replacement timber windows, replacement rooflights, replacing existing plastic rainwater goods within metal fittings, creation of internal hatch door to access kitchen loft space and reconfiguration of modern stud partitions to create an ensuite master bedroom from two existing bedrooms with a shared bathroom.

**GRANTED 04/11/22.**

**CB/22/03640/OUT** – Land adj. to 70 Hanscombe End Road.

Outline Application: Zero carbon development for 70 residential units comprising self-build / custom build / SME dwellings (up to 20 units), private market housing (up to 17 units) and affordable housing (up to 23 units) and over 55's bungalows (up to 10 units) with associated landscaping, green space and footpath links. All matters reserved except for access.

**REFUSED 23/11/22.**

## **NEW/REVISED APPLICATIONS:**

**CB/22/04294/FULL** – 26 Greenfields.

Conversion of outbuilding to habitable space, and infill ground floor extension.

*(PC comments to CBC by 2<sup>nd</sup> December 2022)*

**CB/22/03692/FULL** – Land to the West of Bury Road

Re-cladding of unit.

*(PC comments to CBC by 12<sup>th</sup> December 2022)*

**CB/22/03870/VOC** – 9 Hanscombe End Road.

Removal of condition number 3 of planning permission MB/82/00182/FULL (Erection of a detached bungalow). Removal of agricultural occupancy condition.

*(PC - no comments made)*

**CB/22/03945/SECM** – 9A Hanscombe End Road.

Modification of s106 agreement attached to planning permission CB/11/04276/FULL (Conversion of garage into granny annex and erection of front and rear extensions and erection of new double garage.)

Modification requested: Discharge original s106 agreement.

*(PC - no comments made)*

**CB/22/03683/FULL** – Shillington Memorial Playing Field, Greenfields, Shillington.

Siting of a storage container for storage of sports equipment.

*(Application by Shillington PC)*





# USEFUL TELEPHONE NUMBERS



*CBC's trading standards department has provided the following numbers, to assist residents in identifying doorstep cold callers, purporting to be from energy or water companies, and enable checks with these organization if any reason for concern.*

British Gas	General Enquiries	0800 048 0202
EDF Energy	Customer services	0800 096 9000
National Gas	Emergency Service Helpline	0800-111-999
npower	General Enquiries (landline)	0800 073 3000
	General Enquiries (mobile)	0330 100 3000
ScottishPower	General Customer Service (landline)	0800 027 0072
	General Customer Service (mobile)	0345 270 0700
SSE	General Enquiries	0800 980 8831
Anglian Water		0800 145 145
<b>UK Power Networks</b>	<b>To report or get info on power cuts</b> Text <b>POWER</b> and your postcode to 80876 <b>www.ukpowernetworks.co.uk</b>	<b>National number 105</b>

Central Bedfordshire Council, Priory House, Monks Walk, Chicksands, Shefford Bedfordshire, SG17 5TQ. ( <a href="http://www.centralbedfordshire.gov.uk">www.centralbedfordshire.gov.uk</a> )	
General enquiries .....	0300 300 8000 ( <a href="mailto:customer.services@centralbedfordshire.gov.uk">customer.services@centralbedfordshire.gov.uk</a> )
Highways/Emergencies on the roads (fallen trees, etc). 24-hour emergency team .....	0300-300-8049
Dog Fouling/animal welfare .....	0300-300-8302
Flooding .....	0300-300-8049
Planning .....	0300-300-8307
Recycling/Flytipping .....	0300-300-8302
Police (Emergency) .....	999
Bedfordshire Police (non-Emergency) .....	101
Bus Information .....	0870-608-2608 or 01234-228337
Shillington Services (Martin Brogan) <i>for washing machine repairs, etc...</i>	07975-944394
ShillingtonHelp.....	( <a href="mailto:ShillingtonHelp@gmail.com">ShillingtonHelp@gmail.com</a> ) 01438-940160
The Crown Inn.....	01462-711667
The Musgrave Arms (Giuseppe).....	07739-864634 / <i>pub</i> 01462-712789
The View (formerly Live & Let Live).....	01582-882555

## Parish Councillors – contact details:

Alison Graham 01462-713543	Tony Howells 01582-881611	John Hyde 07799-537346	Angus McCormick 01462-712096	David Mott 01462-711222
Tracey Petrie via the Clerk	Sally Stapleton 07711-504489	Blake Stephenson 07470-636033	Mark Thyne Via the Clerk	Derek Turner 01462-712462

# VILLAGE CALENDAR

## DECEMBER

- 2-4 Xmas Tree Festival – Congregational Church – see poster on page 20
- 3 All Saints' Church – Xmas Fayre – 12 noon to 3.30pm – see poster on page 22
- 4 Congregational Church Service – Revd. Angus McCormick – 10.30am
- 4 Congregational Church Carol Service – Revd. Angus McCormick - 5pm
- 6 Parish Council Meeting – Congregational Church – 7.45pm
- 8 Wives Group – Christmas Outing.
- 9 Shillington Lower School Xmas Fair – 3.30pm-5.30pm
- 10 Social Club – Christmas Karaoke with Chris – from 8.30pm
- 11 Congregational Church Service – Mrs. Hazel Beadle – 10.30am
- 11 Parish Carol Service – All Saints' Church, Shillington – 6.00pm
- 14 Men's Club – Xmas Dinner at Lower Stondon Golf Club
- 17 Social Club – live band "Blind Lemon" – from 9.00pm
- 18 Congregational Church Service – with favourite Carols – 10.30am
- 18 Santa's Float – Marquis Hill, Upton End, Gravenhurst – 4.30 to 7.30pm
- 19 Santa's Float – High Rd North, Church Str, Hillfoot, Bury End – 5.00 to 8.00pm
- 20 Santa's Float – High Rd South, Apsley End, Pegsdon, Hanscombe End – 5.00 to 8.30pm
- 24 Midnight Mass – All Saints' Church, Shillington – 11.30pm
- 25 All Age Communion Service - All Saints' Church, Shillington – 9.30am
- 25 Congregational Church Service – Revd. Nicholas Pnematicatos – 10.30am
- 31 Social Club – New Year's Eve Karaoke with Chris – from 8.30pm (adults only)

## JANUARY 23

- 1 United Service for Christians – Congregational Church – 10.30am
- 3 Parish Council Meeting – Congregational Church – 7.45pm
- 8 Combined Service at All Saints' Church, Shillington – 10.30am
- 9 Playing Field Management Committee Meeting – Social Club – 8.00pm
- 10 Shillingfest 23 Meeting – Social Club – 8.00pm
- 12 Wives Group – New Year Social Party – 2pm to 4pm – Congregational Church
- 15 Congregational Church Service – Revd. Angus McCormick – 10.30am
- 18 Village Hall Management Committee Meeting – Jubilee Room – 7.30pm
- 22 Congregational Church Service – Revd. Angus McCormick – 10.30am
- 29 United Service - Congregational Church - Revd. Angus McCormick – 10.30am

## FEBRUARY

- 1 Men's Club – AGM – Congregational Church
- 4 Friends of All Saints – Gold Cup Race Night – Village Hall – 7.00pm
- 5 Congregational Church Service – Mr. Neville Jephcote – 10.30am
- 7 Parish Council Meeting – Congregational Church – 7.45pm
- 9 Wives Group - History of Hitchin British School by Andy Gibbs - 2pm to 4pm – Congreg. Church

The **PARISH NEWS** is a voluntary community paper produced by **Sally Stapleton** and published by **Lonsdale Print Solutions Limited (01933-233034)** web: [www.lonsdaleps.co.uk](http://www.lonsdaleps.co.uk)

*This magazine is sponsored by Advertisers and Shillington Parish Council.*

*Views expressed in the articles and adverts do not necessarily reflect the views or opinions of the Editor or members of the Parish Council.*

[ed4shillingtonnews@btinternet.com](mailto:ed4shillingtonnews@btinternet.com) ☎ 07711-504489. New website currently under construction