

# PARISH NEWS

covering  
SHILLINGTON, PEGSDON & HIGHAM GOBION



The poster features a dark background with several stylized fireworks in orange and yellow. At the top center is a white rounded rectangle with an orange border containing the text 'FIREWORKS' in large black letters, flanked by two red and orange firework icons. Below this, 'SHILLINGTON' is written in a smaller, black, hand-drawn font, with horizontal lines on either side. The main title 'The Memorial Playing Fields, Shillington' is written in a large, white, hand-drawn font. Below the title, '5pm 'til midnight' is written in orange. On the left, a list of activities is shown in orange: '• BBQ', '• Stalls', '• Drinks', '• Live Band', and '• Spectacular Display'. In the center, there is a small box with a brown border titled 'Ticket Prices' containing the following information: 'ADULT £6', 'CHILD £3', 'FAMILY £15', and '(2 CHILD 2 ADULT)'. To the right of this box, it says 'Tickets available on-line or at the gate' and 'Shillingtonfireworks.co.uk'.

**FIREWORKS**  
— SHILLINGTON —

**The Memorial Playing Fields, Shillington**

**5pm 'til midnight**

- BBQ
- Stalls
- Drinks
- Live Band
- Spectacular Display

**Ticket Prices**

ADULT £6  
CHILD £3  
FAMILY £15  
(2 CHILD 2 ADULT)

Tickets available on-line  
or at the gate

[Shillingtonfireworks.co.uk](http://Shillingtonfireworks.co.uk)

**SATURDAY, 29<sup>TH</sup> OCTOBER 2022**

**Entertainment and Food available from 5.00pm**

**Fireworks Spectacular from 7.00pm**

**Issue 162 - October 2022**

**Deadline for December edition - Friday, 25<sup>th</sup> November 2022**

# PARISH COUNCIL

## **HANSCOMBE END – ANOTHER APPLICATION – CB/22-03640-OUT**

*You may have heard that we managed to fight off the last application on Hanscombe End Road by a very narrow margin 50-50 with the very sensible chair of CBC development management committee having the carrying vote to refuse.*

*Although a little concerning, we thought we could now think about other things.... however the consultants acting for the developers have now submitted yet another application on the same site with a few minor changes (reducing the number of houses to 70 and rearranging a 'site line' so that you could see through the streets, to the church).*

*Some residents close to the site will have received a CBC letter inviting comments, although I guess a lot of you would not have heard about this new one. If you are able, please respond to CBC planning - [peter.vosper@centralbedfordshire.gov.uk](mailto:peter.vosper@centralbedfordshire.gov.uk) with the many reasons why this one should also be rejected. Those who had letters are asked to respond by 6<sup>th</sup>, although date currently shown on CBC website says consultation ends on 13th October.*

*Parish Council have now retained the services of a Planning Consultant to study the application with a professional eye and formulate a more informed response for us to submit as to why we all believe this lovely piece of our countryside should be saved.*

## **OVERGROWN HEDGEROWS:**

*It's that time of year again, when hedgerows are spilling over pavements and highways making it difficult for walkers with push chairs or wheelchair users to keep close to the path, or vehicle drivers coming down village highways having to pull into the middle of the road to avoid overgrowth. It is also proving difficult to be able to see to pull out at junctions when exiting village streets. If you have a hedgerow or bushes in need of a trim, which are overgrowing your boundary and causing an obstruction to road or path users, it would be much appreciated if you could cut them back or employ someone to do so on your behalf.*

## **SERVICE OF REMEMBRANCE:**

*A reminder of our upcoming Service of Remembrance on Sunday, 13<sup>th</sup> November. We are pleased to be able to attend Church again, followed by wreath laying at the Memorial, although the outside Services over the last couple of years seemed to have been enjoyed by all those who attended them. Maybe a thought for such future events.*

*We are now considering adding three more names onto the Memorial. Cllr. Turner, who has been undertaking some historical investigation, has noticed that there are two men listed on the plaque in All Saints Church, who do not appear on our War Memorial – John Richards and George Henry Swain. Additionally, another Shillington born man should also be added as he perished in WW1, but had moved from the village before the war started – Horace Rainbow from Chibley Farm Cottages who enlisted in the Grenadier Guards in 1916. We are looking into these and will see if they can be added as an extra plaque.*

For **all** Parish Council issues please contact:

**Mrs. Helen Smith, Clerk to the Parish Council**

11 Hillside Close, Shillington, Hitchin, Herts, SG5 3NN. ☎ 01462-713224

email: [clerk@shillington-pc.gov.uk](mailto:clerk@shillington-pc.gov.uk) <https://shillington-pc.gov.uk>

# ANNOUNCEMENTS / ITEMS / NEWS IN BRIEF



## ANNUAL SERVICE OF REMEMBRANCE SUNDAY, 13<sup>th</sup> NOVEMBER



### Congregational Church & War Memorial

09:45 – Church Service at Congregational Church

10.45 – Procession from Church to War Memorial for Wreath Laying Ceremony

*All are invited back to the Church for light refreshments following the services.*

*In the interests of community safety, and to show your respect of the occasion, residents in motor vehicles travelling through the village at this time (10.45-11.15) are kindly requested to avoid Church Street/High Road junctions as large groups of people will be walking to/from the Church to the Memorial. There will also be a large group of people standing outside the Memorial in High Road during wreath laying and this area will be temporarily closed off.*

Well I did it !!

The wing walk was the most exhilarating experience ever.  
I did it near Upminster and could see the Thames and the Dartford  
Crossing from up there.



I was in the air for 10 minutes but it only seemed like 3 minutes and we  
reached speeds of 130mph. The G Force was quite amazing.

I have raised over £8000 for my charities, not only through this but from tea parties and second-hand golf clothes and equipment.

Thank you for everyone who has already donated. My Just Giving Page will remain open until  
December - [www.justgiving/fundraising/kathycarroll?](http://www.justgiving/fundraising/kathycarroll?)

Kathy Carroll

## WANTED



Tombola Prizes for my Stall at The Church Fayre on 3rd December.

Any unwanted gifts (bubble bath, wine, chocolates, etc) most  
welcome. Just pop round or give me a call to collect.



**Margaret..... 01462-711635**

## SHILLINGTON CARE

Do you need help with transport from Shillington?

We can get you to the surgery, hospital and collect your prescriptions.

**Shillington Care** has changed and is now an informal group of people able to  
give help. Give us a call and we will arrange for someone to pick you up and bring you  
back. Initially, speak to **Liz** on **01462-711594** or leave a message.  
If there is a delay on this number then call **07930-812940**





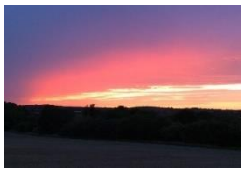
A big **THANK YOU** from me  
for all the help and support from  
Neighbours, Friends and Family  
at my recent tea/coffee morning/afternoon  
to raise funds for  
Breast Cancer Research.  
£765 was raised.  
*Sandra Hare*



The RBL sent Jubilee Pins earlier this year and there are a few left which, as they are in short supply, I have been asked to return. Just wondering if anyone would like one. The suggested donation is £4.00. There are also some Falkland's 40th anniversary pins.

Contact me on either **07702009781** or **shirley.mcgrath1@btinternet.com** if you are interested.

**Shirley McGrath - Poppy Appeal Organiser EAB29**



It's a privilege to live where I do for several reasons! Not least for the amazing sunsets viewed from my home and the sound of our wonderful Church bells! This sunset was the evening the Queen was flown down from Scotland .....very apt! Especially as it was very wet in London when the plane landed.

Well done Shillington Church Bell Ringers! Congratulations on giving us such a lovely, thoughtful reminder in the days following our Queen's death. It was joyous to hear the bells in All Saints Church echoing the mood of our Nation. My interpretation was that of Thanksgiving and Respect, in Mourning. Thank you!

I made the wreath for my front door as my personal tribute, made from foliage and herbs from my garden. Thank you Queen Elizabeth II. God save the King!



*Sandra Hare*



**AMAZON SMILE is RAISING FUNDS FOR OUR PLAYING FIELDS**



*A reminder to support **Shillington Memorial Playing Field** when using Amazon. Amazon will donate 0.5% of your net purchase price to the Charity so for every £100 spent we get 50p.*

*Thanks to those already supporting us – the total isn't huge, but every little helps. With the support of everyone in the Village and any friends and family we can raise much needed funds.*

*All you need to do is login at: <https://smile.amazon.co.uk> then pick "**Shillington Memorial Playing Field**" as your supported charity.*

*We're also registered as a nominated charity with PayPal so this can also be selected for eBay purchases along with the many other online retailers that use PayPal.*

# Letter from the Vicar

**Richard Winslade**  
**The Vicarage, Shillington**

**☎ 01462-713311**    [revrichardwinslade@outlook.com](mailto:revrichardwinslade@outlook.com)



*'We thank thee then, O Father,  
For all things bright and good:  
The seed-time and the harvest,  
Our life, our health, our food'.*

## **Dear Parishioners**

These words have been sung in Schools and churches across the country as people gather to give thanks for the harvest. This hymn has been used for years in both urban and rural areas. Living in a rural location we get to see first hand the hard work of our Farmers as they gather the Harvest and prepare the land for the next growing season.



We have so much in this country to be grateful for. Not only do we have good nutritious food to eat but also we have warm homes, clean water and access to medical supplies. On top of all of this we also have our hobbies, our families and friends and all the little treats we enjoy. It is hard to imagine a life without all these things we take for granted.

We often forget at this time of year the extras. Harvest is about more than just food, it is about 'our life, our health, our food'. This Harvest I encourage you to look at everything that makes our lives so easy in this country and to give thanks to God for all the wonderful things he gives to us all each and every day.

This year as we celebrate we are also very much aware of the concerns of many over the rising cost of living. There will soon be even more people relying on Food banks and other charities. Please consider giving this year in a more practical way by donating to the food bank supported by the church. Donations can be brought to church on a Sunday Morning or dropped off at the Vicarage.

*'Accept the gifts we offer for all thy love imparts,  
and what thou most desirest, our humble, thankful hearts'.*

**Richard**



# ALL SAINTS' CHURCH SHILLINGTON & GRAVENHURST

www.allsaintsshillington.org.uk



## WHAT'S GOING ON

### **OTHER SERVICES:**

- Holy Communion each Sunday at 9.30am with the exception of the 1st Sunday in the month when it's an All Age Communion Service. Both with live feed on Facebook.
- Sung Evensong is on the 1st Sunday in the month at 6.00pm.

### **SPECIAL SERVICES:**

- The annual All Souls Service will take place at All Saints Church, Shillington on Thursday 3<sup>rd</sup> November. There will be a list at the back of the Church from Sunday 30<sup>th</sup> October for names of the departed to be entered for special mention during the service.
- On Sunday 20<sup>th</sup> November Bishop Richard will take the 9.30am holy Communion Service.

### **ALL SAINTS CHURCH - SUNDAY SCHOOL:**

- 1<sup>st</sup> Sunday in the month, a Children's (All Age) service at the Church.
- 2<sup>nd</sup> Sunday in the month, a Zoom Meeting led by Adam Lockey, the Sunday School leader, using short Children's Bible films.
- 3<sup>rd</sup> Sunday in the month is Crafts in the Church from 9.30am led by Adam, plus a parent.
- We are open for children of all ages starting from 4 years old. For more information please contact **Adam Lockey** on **01462 712464**.

### **FUNERALS/BURIALS/THANKSGIVING SERVICES:**

- ❖ 24<sup>th</sup> September - Francis William Simkins - Burial of Ashes.

### **BAPTISMS:**

- ❖ 31<sup>st</sup> July - Harry Apollo David Trowbridge

### **200 CLUB – LUCKY WINNERS:** (prizes 1<sup>st</sup> £50, 2<sup>nd</sup> £25, 3<sup>rd</sup> £10)

#### **August 2022:**

1<sup>st</sup> no. 074 – Andy Gibbs      2<sup>nd</sup> no. 100 – Bradley Foster      3<sup>rd</sup> no. 123 – Jo Winslade

#### **September 2022:**

1<sup>st</sup> no. 190 – Peter Carroll      2<sup>nd</sup> no. 194 – Steve Crow      3<sup>rd</sup> no. 121 – Julia Moss

### **OTHER NEWS:**

Our annual Christmas Fayre will take place in the Church on 3<sup>rd</sup> December from 12.00 noon to 3.30pm. Gift stall, Games, Tombola, Raffle, Refreshments and much more will be on offer.

*Best wishes*

**Liz Brewer** (Church Warden) [lizbrewer313@gmail.com](mailto:lizbrewer313@gmail.com)



*It was lovely to come back to our Meetings on the 1<sup>st</sup> September after the long hot Summer Break. Julia, our President, welcomed Members old and new with our Membership still rising.*

*Our guest, Trudi Clark, introduced “Strictly Comes to Shillington” and expertly took us through our dance steps as we learnt how to “Rock and Roll”. Some Members enjoyed watching, some dipped in and out and some stayed the course and by the end of the evening had a pretty reasonable routine under their belts! It was a great deal of fun!*

*Our Clubs have all been getting back to normal with Lunch Club able to have our postponed Summer Picnic at Wrest Park with cooler temperatures! Supper Club, Walking Group, Book Club and Relaxation sessions are all starting up again and our Knitting Group also met on Zoom with a Coffee morning planned for October to share yarn, patterns and tips!*

*You will be able to see the fruits of their labours at our Christmas Cake and Craft Stall – watch this space and Facebook for more details to come!*

*On the 6<sup>th</sup> October we will welcome David Longman with his talk “More Tales from Bedfordshire Churches”. On November 3<sup>rd</sup>, we have Evan Willison visiting and giving his talk on “Tales from the Auction Room”.*

*Look out for us at the Village Firework evening where we will be serving warm drinks and individual home-made cakes at reasonable prices!*



***Our Meetings take place on the first Thursday of the month at the Congregational Church at 8.00 p.m.***

***If you would like further information or want to come along as a visitor (cost £4) please contact:***

***Myself: Jill Russell, Secretary on 01462 711533 or  
Julia Bruce, President on 01462 712412***

# SELF-SUFFICIENCY

By Annie Palmer (WI Ambassador for Climate Change) [anniejpalmer@hotmail.com](mailto:anniejpalmer@hotmail.com)

When it comes to fighting climate change, I rarely feel as if I'm treading a lonely path. I'm often uplifted, pleasantly surprised or educated by what people are doing - they sometimes say: "It's so little" but a little soon adds up to a lot.

One hot day in August I was helping out with some flower arrangements. The conversation turned to the lack of flowers in the garden because of the heatwave. I said I was bathing in five inches of water (as per 1976) and was saving it for the garden. I was able to do this as my bathroom was downstairs; there's no way I'd come down my stairs carrying buckets of water. The lady I was chatting to promptly put down the hydrangea head she was holding and got out her phone. She showed me a photo of a hosepipe, with Hozelock taps at the top and bottom, coming out of a first-floor window. She and her husband had rigged up a system (which uses siphonic action) to get the water from the bath to buckets on the ground. I was impressed.



I received two emails on the same day in August. One was from CPRE the countryside charity which stated that: "almost 14,500 hectares (35,830 acres) of England's best agricultural land has been lost to development since 2010 – that's enough land to grow 250,000 tonnes of vegetables a year!". The other was from the Government responding to a petition I had signed – 'Ban development on agricultural land to increase food self-sufficiency'. The response stated that: "there is not a direct correlation between the amount of land farmed and productivity" and "our high degree of security is built on (apt couple of words there) strong domestic production as well as imports through stable trade routes".

This summer has been a wake-up call. Many crops have failed due to the heat and drought and yields are substantially down. The situation is dire across the whole world so importing food is not something we can rely on. The cost of food will soar – as a richer country we might be able to afford these costs but the poorer developing countries, who rely heavily on imports, definitely won't.



Why is our government and the construction industry so determined to build executive houses and second and holiday homes on greenfield sites (agricultural land) when we desperately need to be food self-sufficient? We need to be self-sufficient to stop children in developing countries dying from starvation and to prevent our own from doing the same. To import food that could go to poorer countries just because we've covered our soils with concrete is surely wrong. Actually, it's appalling.

During the heatwave I visited friends in Norfolk. Whilst there, I was handed a copy of Church News as they thought I would find an article on climate change, written by Rev'd Peter Cook, of interest. I did – we're singing from the same hymn sheet.

He has kindly allowed me to copy a section here: *"Climate change is starting to have an impact on us. Our way of living has led us to this point and it will lead us to worse yet unless we make some serious changes. It's not an easy prospect for us to consider. We are caught in a cost of living crisis and many are struggling to simply make ends meet.*



*We can't all afford to buy the most ecologically sound produce/product. But then, perhaps we need to also ask ourselves if we can afford not to? We face some hard choices in the years that lie ahead of us – and party leaders promising more and more economic growth is not necessarily the answer.*



*We need as a nation, and as a wider world, to wake up to the challenge that we have set for ourselves and we need to think, and think hard, about what it is we really value the most. Cheap goods, cheap holidays, more of everything – or a world where we can simply live comfortably alongside the other creatures we share it with?”.*

That little word “or” is important – and so is “live”.

**Annie x**

## **ANNUAL FIREWORKS SPECTACULAR**

### **Saturday, 29<sup>th</sup> October 2022**



As mentioned in the August magazine, we've brought the event forward a week to 29<sup>th</sup> October. This proved very successful last year with the community coming together to enjoy a fantastic social gathering.

We will be making improvements to access and will be offering three lanes - one for cash, one with a pdq machine and one for pre-payments

<https://www.shillingtonfireworks.co.uk/>.

Tickets will be available from behind the bar at the Social Club in advance if required.

Ticket prices - £6 adult, £3 child and £15 family (2 adults, 2 children).

Advertising this year has been sponsored by Michael Graham Estate Agents and grateful thanks for donations already received towards this event.

Gates will be open from 5.00pm with BBQ and outside bar (inside open too...)

Hot drinks and cakes will be available from the WI stall and hot puddings and ices from the van.

Fireworks should be set off at 7.00pm for about 20 minutes (hopefully no delays as we had last year and apologies to those sitting at home with pets).

Just waiting for confirmation of possible outside entertainment before the fireworks, will let you know once confirmed.

Following the fireworks - "Mice with Glasses" will be playing in The Club from 9pm.

We would appreciate any help in setting up if anyone is available either on Friday for marquees or Saturday morning for safety fencing - thanks in advance.

Once again there will be free pumpkins for the kids available from outside the Club on Friday 28<sup>th</sup> October (and Saturday 29<sup>th</sup> if any left). A note will be sent out on the Village Facebook page.

*Playing Field Committee*

Any queries - ☎ Gavin 07826-518667 or Sally 07711-504489.

# CBC WARD MEMBER'S REPORT

*for Shillington, Higham Gobion and Pegsdon*

alison.graham@centralbedfordshire.gov.uk ☎ 01462-713543



As autumn approaches, and the leaves fall, the thought PC having to face a renewed application for 70 houses, off Hanscombe End Road is something we could all do without, but here's the background so far: I attended the site visit, poorly attended I have to say, of the councillor members of the Development and Management Committee. This was two days before this site was to be decided upon at the DMC meeting. There the discussion centred largely upon the view of the church from the surrounding land – how much would it be affected? I made the point that equally important was the view from the church, looking down onto its surrounding environment – onto a field of roof tiles? A visit to the church wasn't possible given the size of the members' bus; however the chair was so impressed with this idea that she and another councillor drove up to the church later. They were entranced by what they saw.

Now - to the decision day; the officer had refused the application, for several reasons, and my arguments were in support of his. The agents however made a persuasive case for providing CBC with its first carbon neutral estate. As you know by now, because of this it was a 50-50 vote; and the chair, with the deciding vote – voted for refusal, because of what she saw on her visit up to the church itself...



Within days the application was renewed, with minor changes; reducing the number of houses to 70 and rearranging a 'site line' so that you could see through the streets, to the church. I have been in contact with the planning officer, who is re-evaluating the application - as he should. When you read this, he will have made his decision. If

he is minded to approve this time, I shall have called it in to DMC to decide, as before, with the same arguments against it as before. The village is quite rightly appalled at the thought of this great carbuncle stuck onto one of its six 'ends', and the parish council has decided to employ a consultant with professional expertise in planning to reinforce the village's case against this estate.

Moving on to other matters; as the weather worsens over the coming months, so potholes will deepen and road edges crumble; but before we start to complain I have to explain that highway repairs, everywhere, are increasing in cost dramatically, because the necessary bitumen comes from Russia. For example, Luton BC has already cut back its highways schedule. CBC is, as was explained at the last full council meeting, in a strong financial position. It has always kept a healthy reserve, for worse times to come. They may now be ahead of us. I have asked whether during this winter CBC will keep its buildings open, as 'heat hubs'. The answer was yes, libraries, leisure centres, pools, public buildings – all will be open. (Remember the last time they were open was to keep them open for cooling purposes....).

CBC has received five million pounds as part of the national government support fund, to aid people this winter; it's focusing on the needs of children and pensioners – and the voluntary sector, whose support is going to be so important - £150,000 is to go to this sector. CBC has already aided 19,000 households (15%) and given 7,000 food vouchers out. CBC is also simplifying the tax schemes which are currently unduly complicated, so that people can apply for their benefits in a more straightforward way.

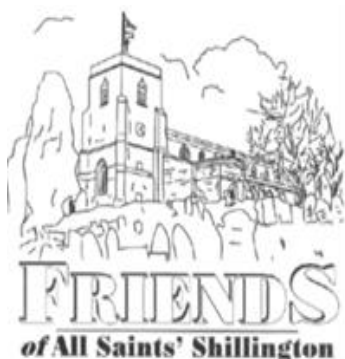
The leader of CBC said categorically that no current claimant would be worse off. Remember, if you feel that you will have financial difficulties, the nearest Citizens' Advice Centre is in Amphill, No.10, Bedford Road. Their advice is free - and friendly.



Now that it's dark, if you find a village street light has died you can check with the clerk to the parish council, Helen Smith, because although the PC is responsible for many of the village's street lights, highways also owns several of them. Helen has the definitive plan. Otherwise it will be torches at the ready!

That's all for now. But while we settle in and draw the curtains as we go into winter, I know that this community will, as ever, be open to aid our neighbours if they should need help. However in the meantime if I can help you in any way, please contact me on the above.

Best wishes, Alison Graham



## ALL SAINTS ILLUMINATED

To celebrate or commemorate your special occasion please contact:

**Catherine** on **07710-823384**

or e-mail [catherine.scleater@btinternet.com](mailto:catherine.scleater@btinternet.com)

*It only costs £25 to sponsor a whole week's illumination - a perfect way to commemorate a special family occasion or loved one's anniversary.*

Sponsor	Message	From	To
David & Fiona Howarth	Donald MacKinnon – remembering your birthday on 31 <sup>st</sup> October.	Sunday 30 <sup>th</sup> Oct.	Saturday 5 <sup>th</sup> Nov.
Shillington Parish Council	Remembering those in the parish who died in the service of their country.	Sunday 6 <sup>th</sup> Nov.	Saturday 12 <sup>th</sup> Nov.
Ann, Andrew, Karen, Thomas & Family	Anthony Paul Walker – remembering a dear husband, dad, grandad and brother on his birthday on 20 <sup>th</sup> December, who died on 26 <sup>th</sup> November 2021. With love from all the family. Forever in our hearts xxx	Sunday 18 <sup>th</sup> Dec.	Saturday 24 <sup>th</sup> Dec.
Fiona & David Howarth	John Howarth – remembering your birthday on 22 <sup>nd</sup> December.	Sunday 18 <sup>th</sup> Dec.	Saturday 24 <sup>th</sup> Dec.
All Saints' Church Shillington	Wishing everyone a peaceful Christmas and New Year.	Sunday 25 <sup>th</sup> Dec.	Sunday 1 <sup>st</sup> Jan.23



## TOGETHER WE'RE STRONGER

by *Revd. Angus McCormick* ☎ 01462-712096

Minister of Shillington Congregationalist Church

So off I went into the depths of the village to call on some people.... some recovering well from covid and others planning a holiday. I saw John L. (Thumbs up) dressed up for a party and looking very colourful. I said hello of course and chatted. Before either of us knew what had happened a voice came from behind and said would I like to join the party. In through the hidden garden gate I went and such a welcome from Frank and friends. Never say no as we only live once.

Passing by Nick's I got offered tea - well proper tea in proper teacups and saucer and delicious biscuits. Sitting there like a lord lots of folks passed by it was like a busy bus queue. Friendly waves and quick chat.



Talking of a bus queue it reminded me how often it has been a real pleasure to get on the local buses. Well there is Jenny H full of welcome and conversation and others ready to join in even if occasionally the bus driver seems too focussed on the job to join in.

Once I had just left my driveway when there were these lovely teenagers sitting on Dr McPherson's bench enjoying their chips and talking.... I said what a lovely aroma and, before I knew it, I was offered a chip. That sent me merrily on my way to search out more of the beautiful company of Shillington.



Remembering the special treats that had come my way recently – Angela two doors down bringing all the good berries picked as she returned from walking the dogs - well those dogs really are a treat ensuring that no one misses their friendly presence - the cat sleeping contentedly under the bush and sometimes seen beside an empty mug at the door - and then there was Mike M who had pressured washed my flagstones for something to do he said !

John with his digger who freely cleared up the mass of brambles in the meadow that were about to invade my front driveway - such a relief. These are some of my favourite things recently that have happened but so many more as well.

The quiet anonymous leaving of donations for the Food Bank each week to help those who are hungry. Of course I'll help put up the Christmas crib says Colin S and he's not alone as we plan for the next annual village Christmas Tree Festival – it's all about bringing us ALL together and knowing we are stronger together - giving together to help others - sharing together in joy and sorrow.



No wonder more people want to live in this paradise where even with the occasional noisy bikes and frequent fast cars we take care of each other and chat. The lovely wheelbarrows with flowers in the War memorial, the flower tubs around the village signs and such beautiful gardens and doors. Have you seen the thatched birds on top of the newly rebuilt house on Bury Road?



Much as we want people to have houses to live in we also want some space to breathe and enjoy our green environment and help us remember the gift of the earth, the gift of just being alive and the gift of having each other's company. I still take part in that minority activity of going to worship to give thanks each week for all of this and more besides. Maybe you do too in your own way. So long as none of us take any of it for granted.

Every blessing,  
Rev. Angus

# CONGREGATIONAL CHURCH NEWS

47 Church Street, Shillington

[www.shillingtoncong-church.org.uk](http://www.shillingtoncong-church.org.uk)

## SERVICES:

All services commence at 10.30am unless otherwise stated. Should you need to contact our Minister with any enquiries his telephone number is **01462 712096**.



## HARVEST FESTIVAL:

Our Harvest Festival was held at the morning service on Sunday 4 September. Gifts of non-perishable goods were received which have been donated to the Bedford Foodbank.

A special Songs of Praise service was held at 3.00pm on the same day when people from other Congregational Churches in the locality attended and we raised the roof with the singing. Refreshments were served after the service.

## BEDFORD FOODBANK:

Regular deliveries continue to be made to the Bedford Foodbank, thanks to the generous donations made by the local community. Extract from a recent letter:



“During 2021 the Foodbank provided food to 7,548 adults and 4,027 children in the community, requiring over 137 tonnes to supply this support. Demand has increased by 30% during the last six months.

From January to the beginning of September 2022 the Foodbank has fed 6,856 adults and 3,516 children, with over 100 tonnes of food. Your help and assistance is invaluable in providing support to people in need”.

Items may be left at 1 Bells Close or at the church when open. Thank you.

### **Items currently in short supply:**

Tinned Fish	UHT Fruit Juice	Tinned Spaghetti
Tinned Vegetables	Coffee 100gm	Tinned Fruit
Tea Bags 40/80	Jars of pasta sauce	Tinned Tomatoes
UHT Milk	Toiletries	Tinned Meat in Sauce (Chilli/Curry)

## COFFEE MORNINGS:

We are holding two coffee mornings in the next couple of months –

- \* **Thursday 27 October** - 10am-12 noon with all donations going to Keech Hospice Care based in Luton.
- \* **Saturday 26 November** - 10am-12.30pm with Christmas items on sale plus refreshments with all donations to be added to the same charities as for the Christmas Tree Festival which is the following weekend.

## CHRISTMAS TREE FESTIVAL:

The Christmas Tree Festival is to be held from **Friday 2 – Sunday 4 December 2022**. We will have the local Wives Military Choir attending over the weekend to sing for us. Full details on next page regarding opening times. All donations will be divided between the Military Wives Choir and Blood Runners (Beds and Herts Group). If you have not participated before and wish to display a Christmas tree or help in any way please contact Mrs Nola McCormick.



# SHILLINGTON CONGREGATIONAL CHURCH CHRISTMAS TREE FESTIVAL 2022



We will be holding our festival again this year on:

- \* **Friday, 2<sup>nd</sup> December** - **3.30pm - 5.30pm**
- \* **Saturday, 3<sup>rd</sup> December** - **1.00 - 5.00pm**
- \* **Sunday, 4<sup>th</sup> December** - **1.00 - 5.00pm**

This year we are being helped by **Chicksands and Henlow Military Wives Choir**, who **will also be singing at our Carol Service at 5.00pm on Sunday 4<sup>th</sup> December.**

As well as singing together, the choirs support the families of service personnel and veterans in time of difficulty and hardship.

The church's chosen charity this year is: **Blood Runners, Beds and Herts Group.**

Volunteers are on call 24/7 to use their own motor bikes to transport blood, frozen milk and organs for transplant to all the local hospitals and hospices as required. All this is done free of charge.

We are inviting local organisations, clubs, societies and individuals to participate by entering a decorated tree which can be free-standing or displayed on a table. Your tree can be themed as you wish, and it is an opportunity for participants to promote what they do.

There is no charge to participate, and we do not make a charge for visitors. Our fund raising is achieved purely from sale of refreshments, raffle tickets and children's tombola, and from collection boxes placed around the church. We are always more than grateful to receive raffle prizes.

Refreshments will be available throughout the festival.

If you would like to help in any way, or would like more details,  
please contact **Nola McCormick** on **01462 712096.**

Thank you.

# SHILLINGTON MEN'S CLUB

(Now in its 18<sup>th</sup> year)



On a lovely summer's evening on the 10<sup>th</sup> August 20 members enjoyed a two course meal of traditional barbecue fayre followed by a sweet course in the delightful setting of the gardens behind the Greyhound pub in Haynes. The atmosphere was very relaxed due to the barmy weather we were experiencing and our own good company, it felt like we were on the Mediterranean coast rather than an English pub garden, great fun was had by all! A big hand to Colin Smith for organising this very popular event.

Our lunch social gatherings are becoming popular and another one took place at our own Musgrave Arms on the 24<sup>th</sup> August. Although numbers were down due to the peak holiday period, 12 members really enjoyed a meal of their choice from the extensive Italian Menu on offer and washed down with the obligatory glass of ale or vino, or two! Big thanks to Michael Bradley for organising this event.

We returned to our evening format when 17 members visited the Three Moorhens Pub in Hitchin. Feedback was that there was quite a delay in receiving our food but once it came it was very nice, this was accredited to the breakdown of communication between the many "managers" our organiser had to encounter! On the whole the evening went well and again a big thankyou to Colin Smith for organising this event.

At the time of writing 12 members were going to the Great Central Railway Gala in Loughborough on the 29<sup>th</sup> September. Here they would be able to ride on 6 of the resident Steam Locomotives and 2 guest locomotives and 1 tramway engine.



The Committee have recently started our own website and will soon be launching on social media so watch this space!

## Future Events:

- ❖ 12<sup>th</sup> October - The Crown at Willington.
- ❖ 19<sup>th</sup> October - Newmarket Races - The Two Year Old Meeting.
- ❖ 9<sup>th</sup> November - The Whitehart at Flitton.
- ❖ 23<sup>rd</sup> November - Lunch Social at the IBOS in Hitchin.
- ❖ 14<sup>th</sup> December - Christmas Dinner at the Golf Club, Lower Stondon.
- ❖ 1<sup>st</sup> February 2023 - Annual General Meeting at the Congregational Church.

## Membership:

Remains stable at 42 members. There are 8 elected Committee members who meet every 12 weeks to review and evaluate past events, plan future events and review the Club's Finances. The Club offers members a bi-monthly opportunity to socialise and enjoy friendly conversation and comradeship over a good pub meal and beverages or a visit to a place of cultural or historical interest. This is the essence of the Club.

New members are warmly welcomed, so any new residents to the village, please take the opportunity to embrace village life, meet local people and come along and see what the Club has to offer! Membership is £5 to join with an Annual Membership of £15.

## Contacts:

**Events Co-ordinator - Michael Bradley**  
(01462 711162)

Email - [michael894bradley@btinternet.com](mailto:michael894bradley@btinternet.com)

**Chairman – Kevin Johnson**  
(01462 712768)

Email – [kevinjohnson360@msn.com](mailto:kevinjohnson360@msn.com)

# SHILLINGTON SHORT MAT BOWLS CLUB

MEET AT

## SHILLINGTON VILLAGE HALL

Monday afternoons – 2.00pm-5.00pm

and

Friday evenings – 7.00pm-10.00pm

*Our new season has now commenced and we held our Presentation event on Monday, 26<sup>th</sup> September where the winners of our various club competitions received their medals/cups.*

*Our Club President John Clarke made the presentations to the lucky winners.*



*Singles Competition Runner Up and Winner - **Brenda Hutty** and **Bill Gearing***



*Triples Competition Winners  
**Bill Gearing, Ros Lewison, Colin Cropley***



*Club Triples League Competition Winners  
**Alan Hutty, Jan Rix and Bill Gearing***

*The new Club Triples League Competition will commence in October with seven teams taking part. Members of SSMBC will also be taking part in the Barnet League Competition which commences on Tuesday 27<sup>th</sup> September at Jimmy Macs in Hatfield.*

*Short Mat Bowls is a fun game, as well as a competitive sport but you can meet and make some good friends in the process. Taking part in National and/or Hertfordshire County Games is only part of the picture and we always welcome new members.*

*Experienced members provide support and guidance for new and developing players and members can join in with regular County playing and learning activities at the County venues in Hatfield and Potters Bar.*

*For further information please contact*

**Derek Lewison (01462 711504) or Jeanette Waller (01462 622737)**



# VILLAGE HALL COMMITTEE



*Most of you will be aware of the decision not to proceed with the new community building on the Memorial Playing Field following the village consultation that the Social Club and Village Hall serve different purposes and should be kept separate. With that in mind ... the Village Hall is a community resource and we're keen to make sure it delivers on its promise.*

*We would love your feedback on the facilities you would like our Village Hall to offer and if there are any services that you think would benefit our Village! Please get in touch by contacting us directly (details below).*

*Just to remind you that the village hall is available for hire for one-off events (birthday parties, wedding receptions, family gatherings, meetings, etc.) or block bookings for organisations. For a quote and to check availability, please contact our Booking Clerk – **Margaret** on **07376-682935** or e-mail: [shillingtonvillagehall@yahoo.com](mailto:shillingtonvillagehall@yahoo.com).*

*Currently we have the following regular block bookings that are always looking for new joiners. Contact details in this magazine for their regular articles, visit their facebook pages or pop along to their meetings.*

- *Bowls Club: Mondays 14.00–17.00 and Fridays 19.00–22.00*
- *Karate Club: Thursdays 18.30–20.30*
- *Baby & Toddler Group: Fridays 09.00–12 noon (in term time)*
- *Kids Dance Class: Fridays 16.15–19.00*
- *Sewing Group: Mondays and Tuesdays – 19.00–21.00*
- *Painting Group: Tuesdays – 10.00–12.00*

*Having full utilisation of our hall will allow us to improve and complete much-needed renovations. We have just had the outside painted and old notice board currently being replaced by C & N (who have done a great job and overall external appearance looks much more appealing). We have a long wish list of building projects, including the village hall roof which needs to be completed as a priority and are exploring grants that may be able to help us with these projects, but again are looking at how we may be able to involve our wonderful parishioners in fund-raising to support the much-needed building works.*

*If you have any time to participate in supporting and helping our Village Hall or suggestions for fund-raising, please get in touch. Wouldn't it be great if we could get a DIY Village Hall SOS project underway, starting with the roof!*

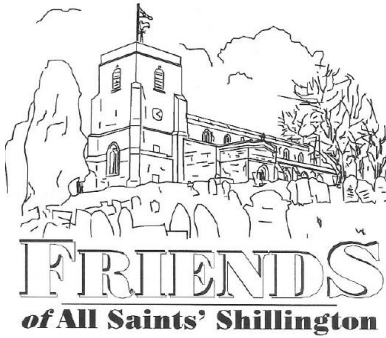
*In the meantime, this is an opportunity to thank Sue Chalmers for her outstanding support as Chairperson of Shillington Village Hall for the last 17 years! We are very sorry to lose Sue but wish her and Kevin much happiness in their new home in Sandy and on their recent engagement!*

*We are delighted to welcome Sylvia as our new Chair. She has been on the Village Hall committee for the last year learning the ropes and now joins our team of volunteers to make our Village Hall the best it can be! If you would like to join our committee please get in touch.*

*With best wishes,*

***Sylvia, Sally, Katie, Denise, Mags, Angus, Paul, Graham***

# HOLDING ON..... TO OUR PRECIOUS CHURCH ON THE HILL



“Read all about it” .....

Tucked away in this issue of your Parish News is an invitation to become A Friend of All Saints Church. We all love, admire and photograph our beautiful church so this is an opportunity to support the maintenance of this 14<sup>th</sup> century building.

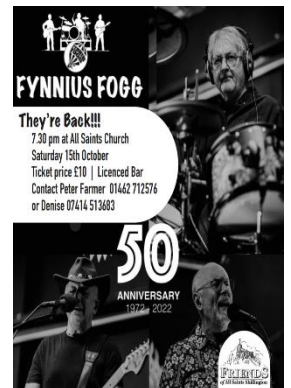
The Friends don't just raise money, they hope to create wonderful community events that bring the village together. Sunday tea season, May to September, saw 100's of people catch up on village news while enjoying home-made cakes and raised a record £2450.

Those funds will go some way to renewing crumbling stonework around the many buttresses; but so much more repair work needs to be done.

To that end, we have a couple of fun events to end the year:

**Fynnius Fogg** – Fabulous 60's/70's covers band celebrating a 50-year union.

**Saturday, 15<sup>th</sup> October** – see page 21 for details and tickets



**Sing-a-long Grease the movie** – massive screen, great sound system and an invitation to Sing-a-long to the unforgettable music of Grease.

**Saturday, 12<sup>th</sup> November** – see page 22 for details and tickets

If you'd like to donate, join The Friends or find out more, you can use the form on the next page.

Greetings,

**JOY ROBERTSON**

Membership Secretary to  
The Friends of All Saints Church

If you would like to make a donation and receive regular updates on the work of

## **Friends of All Saints' Church, Shillington**

### **THERE ARE 2 EASY WAYS TO PAY:**

#### **1. You can make a donation by cheque/post**

I/we enclose a donation of £..... to Friends of All Saints' Church, Shillington for the current year.

Name .....

Home address .....

.....

email address .....

I would like Friends of All Saints to be able to reclaim tax on my donation (see below):

(Yes / No) (Please delete as appropriate)

Signed..... Date .....

Please return this form, signed, together with your donation, to the Membership Secretary of Friends of All Saints' Church:

**Joy Robertson, 18 Vicarage Close, Shillington SG5 3LS**

Or

If you'd prefer to pay online:

**HSBC, Friends of All Saints Church, sort code: 40 24 20, a/c No. 71596985**

**How we can ADD 25% to your donation.** Under tax legislation, the Friends can recover some of the income tax you pay on any of your taxable income. In allowing us to recover this tax, you must have paid, or be due to pay, an amount of income tax at least equal to that we will be able to reclaim on your donation, this being 25p for every £1 you give.

In order for us to reclaim this very valuable bonus to our income, you need do nothing at all except sign and tick the box above to confirm that you are a taxpayer. We thank you in advance if you are able and prepared to do this.

Alternatively, donations can be made via the QR code below.



# RAMBLING ON with DEREK TURNER

☎ 01462-712462

[derek.turner@phonecoop.coop](mailto:derek.turner@phonecoop.coop)

In July, we were fortunate to take our holiday in sunny Sidmouth in Devon. It's an attractive old resort with fine Regency architecture and spectacular stretches of the Jurassic coast on either side. A few miles west near Budleigh Salterton, we walked along the valley of the River Otter where the Lower Otter Restoration Project was underway. The air was throbbing with the sound of diggers and earthmovers dismantling old sea defences and embankments that it is no longer viable to maintain in the face of rising sea levels. This area will become marshes dotted with ponds which will support more wildlife.



Our grown-up children were with us and returned in the evening to explore an area upstream where beavers have lived since 2008. They were rewarded with a pair swimming past as the daylight seeped away. These cute animals are often busy felling trees- usually low-value willow and alder- and making dams. These hold back flood water and are helping to prevent homes downstream flooding when the river rises after heavy rain. Beavers probably last swam in Bedfordshire's rivers over 2,000 years ago and are one of many wild animals that once lived in this area. Most died out when they were persecuted, the habitat they needed changed or non-native species arrived and spread disease.

Could we ever see beavers in Shillington again? Unless there are drastic changes to the landscape, the answer is an emphatic no. They thrive where rivers flow through woodlands. The brook here, like most of the Ouse catchment, has none. Other once common wild animals like bears probably disappeared from this area two or three millennia ago and wolves and wild pigs may have followed suit a thousand years ago. Re-introducing any of them would need much more woodland than exists nowadays. However, there are success stories such as buzzards, little egrets and of course, red kites reintroduced to the Chilterns 30 years ago and common in Shillington skies today. Climate change will continue to drive away some species but create opportunities for others. Watch out for different butterflies as European types find conditions here are now to their liking.

With Putin's reckless invasion of Ukraine and his determination to wage war with the rest of Europe using gas (or the lack of it) as a weapon, the prospect of higher energy bills looms. Government intervention will limit the impact for a few months but the overall trend will continue upwards. We know that burning gas is driving global warming and if the extra cost encourages us to use less of it, we'll be doing something positive to tackle the situation.

After the hot summer came the cold spell in September and we Turners used it as an opportunity to try out our winter fuel-saving strategy. We donned extra layers of clothing to warm ourselves rather than heat the whole house. We're fortunate that it is semi-detached and we lose no heat along the wall we share with our neighbours. We've also installed insulation to minimise heat loss on the other sides and through the roof. However, we're on the north side of our pair and on the edge of the village where we're exposed to the blast of winter winds determined to cool down our home.



One thing we're wary of is condensation forming on cold surfaces. When my wife was working as a surveyor, she often noticed mould growing in the homes of others. The residents wanted her to check for leaks but she usually found that inadequate ventilation was the culprit. When mould gets established, it eats into the wall surface which will need removing and expensive re-plastering doing but only after the problem has been resolved. We shall open our bedroom windows and those of other rooms to give them an airing, even if we lose some heat. But however cold it gets, I suppose that we need to show the same wartime spirit that we heard so much about every time a significant wartime anniversary occurred and in reflections about the wartime life of the then Princess Elizabeth. As the mother of one of my friends told me about hers, "Whatever happened, we just got on with it".



# FYNNIUS FOGG

**They're Back!!!**

7.30 pm at All Saints Church

Saturday 15th October

Ticket price £10 | Licenced Bar

Contact Peter Farmer 01462 712576

or Denise 07414 513683



# 50

ANNIVERSARY

1972 - 2022



FRIENDS OF ALL SAINTS PRESENTS

SING - ALONG

Fancy Dress Optional

Pink Ladies

T Birds

GREASE

**12TH NOVEMBER AT ALL SAINTS**

**19.00 ARRIVAL - MOVIE START 19.30**

**TICKETS £15 INCLUDING SUPPER & PROSECCO  
BAR AT VENUE**

**TICKETS CALL LILY or SABINE 07867 632033**

**e-mail: [sabinetestar@icloud.com](mailto:sabinetestar@icloud.com)**

**Denise 07414 513683**

*All proceeds will be going towards church restoration work*



*All Saint's  
Church Presents*

# Christmas Fayre

**Saturday 3rd  
December**

**Shillington  
12:00pm – 3:30 pm**

**Food served from 12:00pm**

**Mulled  
Wine**



**Games**

**Stalls**



**Raffle**





## **WE NEED MORE VOLUNTEER DRIVERS!**

**COULD YOU CONSIDER GIVING UP SOME TIME TO HELP US  
MAINTAIN OUR COMMUNITY BUS SERVICES?**

**OUR OPERATION IS RUN TOTALLY BY VOLUNTEERS AND WE NOW  
SEEK ADDITIONAL DRIVERS.**

**OUR ROUTES:** We provide fixed morning weekday routes to the residents of the towns and villages around Shefford & Stotfold with destinations including Bedford, Biggleswade, Cambridge, Hitchin, Milton Keynes, St Albans, St Neots & Welwyn Garden City.

**OUR REQUIREMENTS:** We need additional volunteer drivers to take on a particular route – normally we can let you choose – on a weekly, fortnightly or monthly basis. How often you drive will be entirely up to you and, usually, we can fit you into our rota programme to suit your other commitments.

**WHAT YOU NEED TO DRIVE:** You need to be under 75 and have Category D1 on your driving licence. This will be common if you are in the older generation age group but it can be applied for from the DVLA so age need not be a restriction.

**WHAT WE OFFER:** Full on the job training will be provided and you can accompany a driver on a service to understand more of the role. You will never be asked to drive on your own until you are entirely comfortable about doing so.

**WHAT YOU GET BACK:** Our passengers are generally in the older age group and are most grateful for the service we provide. It is a very social, friendly atmosphere on the buses and you will quickly get to know your regulars who will express their gratitude. It is a very rewarding service that we provide and will give you much satisfaction in helping.

**MORE INFORMATION?** Please drop us an e-mail ([thewanderbus@gmail.com](mailto:thewanderbus@gmail.com)) with your contact details and we will get back to you to answer any questions and hopefully set a date to start your volunteering. Alternatively, you can call us on **0300-123-3023**.



DATE	DESTINATION	Entrance Fee as per current website	BUS FARE
<b>Thursday 29<sup>th</sup> September</b>	<p><b>ASCOTT HOUSE &amp; GARDENS, nr Leighton Buzzard.</b></p> <p>An old English black &amp; white timber manor house dating back in parts to C17<sup>th</sup>. Acquired by the Rothschild family in 1873. Housing and exceptional collection of paintings, fine furniture and superb porcelain. Extensive gardens.</p>	£13.00 p.p. House & Gardens or £8.00 Gardens only. Free to National Trust	£12.00 p.p. Pick up 11.30/12.00  Depart 15.30
<b>Thursday 28<sup>th</sup> October</b>	<p><b>BICESTER VILLAGE SHOPPING CENTRE, Oxon.</b></p> <p>Home to more than 160 luxury fashion &amp; lifestyle boutiques of many of the leading brands offering savings of up to 60% off the recommended retail price. Dine at Soho House &amp; Co's farmhouse restaurant and café in the splendour of Café Wolseley.</p>	Free Entry	£20.00 p.p. Pick Up 10.00/10.30  Depart 15.15.
<b>Thursday 24<sup>th</sup> November</b>	<p><b>CHRISTMAS MARKET – BURGHLEY HOUSE, STANFORD</b></p> <p>Enjoy a magical festival shopping experience in the idyllic surroundings of Burghley House. Wander amongst the traditional chalets, heated marquees and avenue of pagodas bedecked in sparkling Christmas decorations and lights. Over 130 stalls offering everything from luxury gifts, artisan food and drink to Christmas decorations and winter clothing. A festive day out with carol singers, a Victorian carousel and much more.</p>	Entry £6.00 per person	£14.00 p.p. Pick up 11.15/11.45  Arrive 13.00  Depart 16.15

To book: **Call 0300-123-3023**. Or email: [thewanderbus@gmail.com](mailto:thewanderbus@gmail.com).

We require a deposit of £10.00 p.p. for any excursion.

Post a cheque to **Wanderbus, 5 The Pastures, Upper Stondon, Beds SG16 6QB** or bank transfer to: CAF Bank Ltd, Sort Code :40-52-40 Acc: 00013118, Wanderbus Ltd.

(Use your name as reference).

Cancellations must be made 10 days before the event or full charge may be taken.

# GET OUTSIDE THIS AUTUMN WITH BEDFORDSHIRE RURAL COMMUNITIES CHARITY

Taking a walk outside is known to help lift the spirits and has real benefits to both body and mind. In fact, research shows that spending just two hours a week in nature can help us feel happier and healthier. Being outside in nature can have a calming and restorative effect, helping us to reduce stress. It can also help bring some relief to mental health conditions such as anxiety and depression. And the best part is that getting outside in nature is free and available to all. Nature is everywhere!



Promoting health and wellbeing in communities is at the heart of Beds RCC's work. This is one of the reasons that we are promoting **National Self Care Week** running **November 14<sup>th</sup> until November 20<sup>th</sup>** – whose theme is Exercise Care for Life. Going out for a walk is something we can do to look after ourselves. And as the nights begin to close in, some of us may need to give ourselves that extra bit of self-care.



Beds RCC offers Wellbeing Walks across Bedfordshire - free, regular walks open to all. They are aimed particularly at people who are presently doing little or no exercise. They usually last from 60 to 90 minutes, though there are also some shorter 'beginners' walks.

Our walks are led by friendly people, specially trained for the job. Along with fellow walkers, our walk leaders provide all the advice and encouragement a new walker needs to build fitness at a pace that's right for them. In just a short time, a small amount of regular exercise can significantly improve a person's health, well-being and confidence.

**We're currently looking for new walk leaders, to help set up new and support existing Wellbeing Walks across the county. By becoming a volunteer walk leader, you can play a part in helping people to improving their health, well-being and confidence through walking.**

**For more information about Wellbeing Walks or to find out about becoming a volunteer walk leader go to [www.bedsrcc.org.uk/wellbeing-walks](http://www.bedsrcc.org.uk/wellbeing-walks) or contact Mike Fayers on [mikef@bedsrcc.org.uk](mailto:mikef@bedsrcc.org.uk) or 01234 832619.**

Another way Beds RCC help people to look after themselves is through our Social Prescribing service. Our Community Wellbeing Champions who help people to take control of their wellbeing by connecting them with their local community, improving physical activity, and empowering them to make decisions to support their health.

Visit [www.yourwellbeingbedfordshire.org.uk](http://www.yourwellbeingbedfordshire.org.uk) to find out more.

# SHILLINGTON SOCIAL CLUB PRESENTS.....

*Back By Popular Demand*

## MICE WITH GLASSES

Saturday 29<sup>th</sup> October - after The Fireworks @ 9pm



\*\* \*\* \*\* \*\* \*\*



## Live Music with THE BLACK SQUIRRELS BAND

Saturday 26<sup>th</sup> November  
@ 9pm

\*\* \*\* \*\* \*\* \*\*

Karaoke with Chris  
Saturday 15<sup>th</sup> October  
@ 8.30pm





# Shillington Baby & Toddler Group



We have a new team leading Shillington Baby & Toddler Group this term, but we still need additional volunteers to ensure the Group can continue to run each week. This doesn't need to be a week-in, week-out commitment! Ideally we'd like to have a pool of helpers who can commit to helping, e.g. once a month.

If you are interested and would like to know more, please email us at [shillingtonbtg@outlook.com](mailto:shillingtonbtg@outlook.com), message us on Facebook (@Shillingtonbabyandtoddlergroup) or come and chat to us at one of our Friday morning sessions in the Village Hall (9.30am - 11.30am in school term time).



Find us on  
Facebook

Registered Charity 1054966



We are all pleased to be back in school, the children have settled remarkably well into their new classes and our new children have been getting used to school life here at Shillington Lower. We also have a special new starter at Shillington and Stondon Federation—Parker the dog!

Parker is a 4-month-old, Fox Red Labrador. He lives at home with Mrs Young (our Head of School) and her family. Parker's purpose in school will be to support and promote the wellbeing of the whole school. He is based in the Head's office during the day and there are rules in place around the children's interaction with him, to protect the welfare of both him and the children. The children will be taught how to approach him and support Mrs Young with his training. No child is expected to interact with Parker if they are nervous or have an allergy. We are looking forward to Parker becoming a part of our everyday school life once he has completed his puppy training.



In school we are looking forward to celebrating Harvest festival and are asking for donations for The Need Project again this year. Our Year 4 class are travelling to Grafham Water Centre for their residential stay, and we look forward to reporting on all the exciting activities we have planned. In school the children are busy learning their new topics of the year, Reception class are learning about the subject All About Me & People Who Help Us, Year 1 are learning about Toys, Year 2 Castles, Year 3 the Stone Age and Year 4 are learning about the explorer Shackleton.

Back in June our brand-new Pixies Pre-School building was lowered into the school grounds, and we have been extremely excited to welcome back our existing and new children into our fantastic new building. The Pixies team have been really busy creating a welcoming environment for the children to learn and play in our dedicated pre-school with their own exclusive garden and play area. We would love to show you around so if you are interested in your child attending our Pixies class Pre-school, please contact the school office to arrange a tour. Here are a few photos of the outside and inside of our new Pixies Pre-school building.



In school we are looking for someone who has DIY/handyman/woman skills who would be willing to help us around school with some support for a few hours now and again. Please contact the school office if you think you could help us out.



# PIXIES Pre-School



***FOR LITTLE LEARNERS WITH BIG IDEAS!***

Pixies Pre-School is run and managed by the school, we take children from 2 years until they start in Reception class, and we work closely to provide a smooth transition into school.

Children can start in Pixies class when they are ready to be in a pre-school environment.

We offer:

- ☺ A vibrant and fun classroom
- ☺ Qualified, dedicated, and experienced staff
- ☺ Fantastic outdoor area providing stimulating learning experiences
- ☺ We provide a range of imaginative and stimulating learning activities
- ☺ 15 & 30 hour funding

Come and see our fantastic new building. Tours are available, contact the school office.



## Outdoor Explorers

Outdoor Explorers is our Monday morning adventure where we encourage all children to appreciate the natural world whilst developing their confidence, self-esteem and help create more independent learners inspiring our children about the great outdoors.

The sessions are run outside on the school field by our staff, come rain or shine.

Limited spaces are available.  
Please contact the school office  
for more information.

For more information, please contact us at:

**Shillington Lower School**

Greenfields, Shillington, Nr Hitchin, SG5 3NX

Tel: 01462 711637 Email: [office@shillingtonlower.co.uk](mailto:office@shillingtonlower.co.uk)

[www.shillingtonstondon.co.uk](http://www.shillingtonstondon.co.uk)

# SPRING BULBS by Donna Cameron

## Donna's Garden Designs - ☎ 07833-670934

After such a dry summer us gardeners are really now hoping for rain. As a designer I am now seriously researching drought tolerant plants that will survive these conditions next year. I am continuously looking in people gardens to see what plants have withstood the heat.



Recently back from summer holidays I am now looking forward to next year. I am starting to buy flowering spring bulbs for clients. I love bulbs as after a period of dormancy in the garden, up they pop to hail in the spring. These can be planted from September onwards although Tulips like to wait a bit later into Autumn. There are so many to choose from Daffodils, Tulips, Camassia, Alliums, Crocus. Just go to a local garden centre and you will be spoilt for choice. They are so easy to grow and will bring such joy to watch them emerge and then burst into flower. I always find it miraculous that these brown little bulbs hide such beauty.

You can either plant them direct into the ground, although you may to wait until the ground has softened up with some rain! Or plant in pots, that can be moved around to where you want when flowering. To give them pride of place. Plant 2 to 3 times the depth of the size of the bulb. You can plant in amongst the borders or if you have room have a cutting garden in rows and then you won't feel guilty snipping them from the border! Then later you can over plant with Dahlias. A popular way in pots at the moment is what's known as 'Lasagna Pots'. This is when you add in layers of different types of bulbs for progressive flowering e.g. Daffodils at the bottom, then Tulips then on top Crocus and Narsissus.

A great tip I have recently learnt that my great uncle used to do who was also a professional gardener up in Scotland was to sprinkle in some Blood, Fish and Bone in with the bulbs. Also when finished flowering let the leaves die back for 6 weeks as the nutrients go back into the bulb for next year's displays.

Must Haves....

**Alliums:** These are great in the garden and one of my favourites with their balls of purple or white dotted amongst the bed add such architectural interest. Some of their heads can be enormous and look like they are from Outer space! Leave the seed heads after flowering for added interest in the borders. Also another top tip is to underplant with Hardy Geraniums or Alchemilla Mollis to cover up their scruffy foliage. Recommended '*Purple Sensation*'.



**Daffodils:** These are a must to herald in the Spring. With an enormous variety to choose from for all different areas and size of garden. Recommended for pots, rockeries and hanging baskets - *Narsissus 'Tete a Tete'* Jolly and bright and a long flowering period. For Fragrance - '*Winston Churchill*' or '*Avalanche*'. Indoor fragrance '*Paper white*' although some people find this too heady. White Varieties - '*Thalia*' or '*Pheasant Eye*' - this one has a petite yellow and orange centre.

**Tulips:** Unlike the bulbs mentioned above that can flower for numerous years. Tulips can be a bit less predictable and best to plant fresh bulbs every Autumn to ensure a good display. I love colour schemes with tulips or mixed in with Forget me nots and Wallflowers for an old fashioned look. For fragrance – '*Ballerina*'.

**Snowdrops:** These are best planted in the green for more reliable show in February.

### JOBS IN THE GARDEN FOR OCTOBER

<ul style="list-style-type: none"> <li>* Prune climbing roses.</li> <li>* Divide Rhubarb.</li> <li>* Harvest lettuce and radish.</li> <li>* Plant out spring cabbages.</li> <li>* Trim hedges</li> </ul>	<ul style="list-style-type: none"> <li>* Cut back perennials that have died down.</li> <li>* Move tender plants to the greenhouse.</li> </ul>	<ul style="list-style-type: none"> <li>* Divide perennials.</li> <li>* Harvest apples and pears.</li> <li>* Last chance to sow grass seed.</li> <li>* Collect seed to sow next year.</li> </ul>
--	---	---

# VILLAGE FACILITIES

## SHILLINGTON VILLAGE HALL



All enquiries please contact:  
the **BOOKING CLERK** on ☎ **07376-682935**  
e-mail: [shillingtonvillagehall@yahoo.com](mailto:shillingtonvillagehall@yahoo.com)

*Large Hall - Stage - Small Meeting Room - Kitchen & Bar Facilities - Disabled Access & Toilet.*

✳ **Children's Parties** ✳ **Discos/Dances** ✳ **Meetings** ✳ **Toddler Groups** ✳  
✳ **Indoor Bowls** ✳ **Exhibitions** ✳ **Circuit Training** ✳ **Karate** ✳

The Car Park (when not in use by hall bookers) can be hired for events where village parking is limited.

*The Village Hall Committee would politely request residents making use of the Car Park for overnight parking to please note (see booking sheet on Notice Board) that Hall Hirers take priority for parking for their bookings, if you could ensure you are not occupying the car park during these times.*

*Thank you ☺*

## SHILLINGTON SOCIAL CLUB

*Greenfields, Shillington*

☎ **07826-518667** (Gavin)



### Current Opening Times:

✳ **Mondays: 7.30pm-11.00pm** ✳ **Fridays: 7.30pm-11.30pm** ✳  
✳ **Saturdays: 12 noon - 8.00pm** ✳ **Sundays 12 noon-8.00pm** ✳

⇒ *Licensed bar with variety of beers, wines and spirits at social club prices – £1 a pint less than most pubs.*

⇒ *Regular monthly live music and fund raising events and a great pool table.*

⇒ *Cappuccino, Latte & Hot Chocolate available*

Don't forget to look out for updates on the Shillington Village & Shillington Social Club Facebook Pages.

### Licensing Policy:

Children aged 16 and under are welcome with an appropriate adult until 9pm on any day we are open

**Social Club Committee**



## Swap to stop this Stoptober



Stoptober starts this weekend. It's a great time to find lots of support, advice and encouragement to go smoke-free. And our Stop Smoking Service is here to help you every day and every step. Throughout Stoptober, the team can provide e-cigarettes to help you make the swap from cigarettes as part of your quit attempt. Don't want to vape? No worries, they also have a whole range of tactics alongside tailored one-to-one behavioural support. All delivered by our friendly team of specialist advisors.

---

### Ongoing support to stay smoke-free

You are **three times more** likely to succeed in your goals with support and medication from a specialist.

Quitting can improve mood and help relieve stress, anxiety, and depression. Those who quit for a year halve their risk of a heart attack, compared to smokers.

Our Stop Smoking Service has over 60 years of experience helping people to quit smoking. **Contact the team today - no doctor's referral needed:**

- Visit [thestopsmokingservice.co.uk](http://thestopsmokingservice.co.uk) for full details and to self-refer.
- Phone on 0800 013 0553
- Email [stopsmokingservice@nhs.net](mailto:stopsmokingservice@nhs.net)

---

### Did you know...

Smoking remains one of the nation's leading causes of preventable illnesses and death, **killing on average 78,000 people each year.**

Quitting's easier with help.  
Contact us for free support today:

- 📍 [thestopsmokingservice.co.uk](http://thestopsmokingservice.co.uk)
- 📞 0800 013 0553





## ALERT: Energy Bill Scam texts

Action Fraud has received 139 crime reports relating to fake text messages purporting to be from the UK government.

The texts state that the recipient is “owed” or “eligible” for an energy bill discount as part of the Energy Bill Support Scheme. The links in the emails lead to genuine-looking websites that are designed to steal your personal and financial information.

You can see screenshots of the text messages on our Twitter post [here](#).

### How to protect yourself

Energy Bill Discount : £400 off energy bills for households in Great Britain from October 2022. You **do not need to apply for the scheme** and you will not be asked for your bank details.

Spotted a suspicious text message? Forward it to **7726** (it’s free of charge). If you forward a text to **7726**, your provider can investigate the origin of the text and arrange to block or ban the sender if it’s found to be malicious.

For more information on how to stay secure online, please visit: [www.cyberaware.gov.uk](http://www.cyberaware.gov.uk)



**Message**

Action

(Action Fraud, Administrator, National)

**Sent**

**By**

Fraud

## CENTRAL BEDFORDSHIRE TO SEE BOOST IN ELECTRIC VEHICLE CHARGEPOINTS FOR RESIDENTS

### Electric Vehicle Chargepoints

Funding confirmed for 12 locations across Central Bedfordshire



We have secured £360,000 in funding from the Office for Zero Emission Vehicles (OZEV) to install 48 new electric vehicle charge points at 12 locations across Central Bedfordshire.

This project will specifically target neighbourhoods where the ability to be able to charge electric vehicles is challenging due to a lack of off-street parking and limited opportunities for home charging.

We're working with BP Pulse, our chargepoint provider on replacing and upgrading existing charge points in our car parks and assessing sites suitable for rapid chargepoints.

Installations are programmed to take place in October and November in the following locations:

- *The Baulk Car Park, Biggleswade*
- *Priory Gardens Church Square Car Park, Dunstable*
- ***Village Hall Car Park, Gravenhurst***
- *Park Pavilion Car Park, Henlow*
- *Tithe Farm Recreation Ground Car Park, Houghton Regis*
- *Linslade Memorial Playing Fields Car Park, Leighton Buzzard*
- *Baker Street Car Park, Leighton Buzzard*
- *The Brache Parking Bays, Maulden*
- *Market Square Parking Bays, Potton*
- *STMA Hall Car Park, Shefford*
- *Memorial Hall Car Park, Stotfold*
- *Brook Street Car Park, Stotfold*

We plan to bid again for grant funding to install more charge points in the autumn and into 2023 as part of a long-term commitment to supporting the Central Bedfordshire area to move towards net-zero carbon emissions.



## SHILLINGTON CHILDMINDERS

*Childminders provide safe, friendly home environments for children to play and have fun whilst gently learning through their play. We take children on outings to farms, play centres, splash parks, museums and libraries, as well as teach them life skills such as helping to do shopping, gardening and cooking.*

*We are registered with Ofsted, have public liability insurance, follow the Early Years Foundation Stage curriculum, undertake regular training including Safeguarding and First Aid and receive regular newsletters and bulletins from professional organisations.*

*We meet up at least once a week to provide children with the opportunity to learn social skills and experience different play resources. The children get to know all the childminders and children which enables us to offer the ability to cover holidays and other absences for each other.*

*Some of us are able to provide up to 15 hours of free childcare a week for eligible 2 year olds, as soon as care starts, in the same way that nurseries and pre-schools can. We are also able to provide the free sessions for all 3 and 4 year olds; at least 15 hours per week up to 30 hours per week (for 38 weeks of the year) depending on parental eligibility and the childminder's policy.*

*The free sessions normally start the term after the child's 3rd birthday. There may be additional charges to cover e.g. food and outings.*

*We each have differing childcare availability such as before and after school care, daytime childcare, overnight childcare, ad-hoc care or flexible care e.g. for shift workers.*

Please contact us as below, or via Shillington Childminders on Facebook, if you have any childcare requirements for now or the future

<p><b>Laura Forgham</b> 01462 713638 <a href="mailto:lauraforgham@btinternet.com">lauraforgham@btinternet.com</a></p>	<p><b>Katie Brettell</b> 01462 713054 <a href="mailto:katiebrettell@icloud.com">katiebrettell@icloud.com</a></p>	<p><b>Deb Pateman</b> 01462 338304 <a href="mailto:debpateman@msn.com">debpateman@msn.com</a></p>
<p><b>Carli Mauer</b> 07912 549931 <a href="mailto:carlimauer@gmail.com">carlimauer@gmail.com</a></p>	<p><b>Laura Griffiths</b> 07493 903621 <a href="mailto:lauragriffiths820@gmail.com">lauragriffiths820@gmail.com</a></p>	

# PLANNING APPLICATIONS

## **DECISIONS from CENTRAL BEDFORDSHIRE COUNCIL:**

CB/22/00679/OUT – Land adj. to 70 Hanscombe End Road, Shillington.

Outline Application: Development of up to 72 houses to include up to 35 self-build, custom build and/or small/medium sized enterprise units with all matters reserved except access

**REFUSED 07/09/22.**

## **NEW/REVISED APPLICATIONS:**

CB/22/03224/FULL – 17 Upton End Road.

New self build 4 bedroom dwelling.

*(Comments to CBC by 7<sup>th</sup> October 2022)*

CB/22/03536/VOC – Chiltern View, Higham Road, Higham Gobion.

Variation of condition number 2 of planning permission CB/21/04807/FULL (Erection of an agricultural barn) – The approved structure shall be used only for agricultural purposes and any other use considered in the countryside.

*(Comments to CBC by 7<sup>th</sup> October 2022)*

CB/HDG/22/00468 – Section of land running between Flitton and Meppershall.

Hedgerow: removal of 21 sections of 5m of hedgerows to facilitate access and installation of drinking water pipeline by Anglian Water. Installation between Flitton (E:505257, N:236487) and Meppershall (E:513516, N:235542). All hedgerows will be replanted like-for-like or improved.

*(Comments to CBC by 3<sup>rd</sup> October 2022 – extension for PC requested)*

CB/TCA/22/00486 – 91 Church Street.

Works to trees within a Conservation Area: Crown reduce Mulberry tree by up to 3m to viable growth points (1) and fell Sycamore tree to ground level (2).

*(Comments to CBC by 4<sup>th</sup> October 2022 – extension for PC requested)*

CB/22/03640/OUT – Land adj. to 70 Hanscombe End Road.

Outline Application: Zero carbon development for 70 residential units comprising self-build / custom build / SME dwellings (up to 20 units), private market housing (up to 17 units) and affordable housing (up to 23 units) and over 55's bungalows (up to 10 units) with associated landscaping, green space and footpath links. All matters reserved except for access.

*(Comments to CBC by 13<sup>th</sup> October 2022 – extension for PC requested)*

CB/22/03609/LB – 4 The Bury, Upton End Road.

Listed Building: Replacement timber windows, replacement rooflights, replacing existing plastic rainwater goods within metal fittings, creation of internal hatch door to access kitchen loft space and reconfiguration of modern stud partitions to create an ensuite master bedroom from two existing bedrooms with a shared bathroom.

*(Comments to CBC by 14<sup>th</sup> October 2022)*



## USEFUL TELEPHONE NUMBERS



*CBC's trading standards department has provided the following numbers, to assist residents in identifying doorstep cold callers, purporting to be from energy or water companies, and enable checks with these organization if any reason for concern.*

British Gas	General Enquiries	0800 048 0202
EDF Energy	Customer services	0800 096 9000
National Gas	Emergency Service Helpline	0800-111-999
npower	General Enquiries (landline)	0800 073 3000
	General Enquiries (mobile)	0330 100 3000
ScottishPower	General Customer Service (landline)	0800 027 0072
	General Customer Service (mobile)	0345 270 0700
SSE	General Enquiries	0800 980 8831
Anglian Water		0800 145 145
<b>UK Power Networks</b>	<b>To report or get info on power cuts</b> Text <b>POWER</b> and your postcode to 80876 <b>www.ukpowernetworks.co.uk</b>	<b>National number 105</b>

Central Bedfordshire Council, Priory House, Monks Walk, Chicksands, Shefford Bedfordshire, SG17 5TQ. ( <a href="http://www.centralbedfordshire.gov.uk">www.centralbedfordshire.gov.uk</a> )	
General enquiries .....	0300 300 8000 ( <a href="mailto:customer.services@centralbedfordshire.gov.uk">customer.services@centralbedfordshire.gov.uk</a> )
Highways/Emergencies on the roads (fallen trees, etc). 24-hour emergency team .....	0300-300-8049
Dog Fouling/animal welfare .....	0300-300-8302
Flooding .....	0300-300-8049
Planning .....	0300-300-8307
Recycling/Flytipping .....	0300-300-8302
Police (Emergency) .....	999
Bedfordshire Police (non-Emergency) .....	101
Bus Information .....	0870-608-2608 or 01234-228337
Shillington Services (Martin Brogan) <i>for washing machine repairs, etc...</i>	07975-944394
ShillingtonHelp.....	( <a href="mailto:ShillingtonHelp@gmail.com">ShillingtonHelp@gmail.com</a> ) 01438-940160
The Crown Inn.....	01462-711667
The Musgrave Arms (Giuseppe).....	07739-864634 / pub 01462-712789
The View (formerly Live & Let Live).....	01582-882555

### Parish Councillors – contact details:

Alison Graham 01462-713543	Tony Howells 01582-881611	John Hyde 07799-537346	Angus McCormick 01462-712096	David Mott 01462-711222
Tracey Petrie via the Clerk	Sally Stapleton 07711-504489	Blake Stephenson 07470-636033	Mark Thyne Via the Clerk	Derek Turner 01462-712462

# VILLAGE CALENDAR

## OCTOBER

- 9 Congregational Church Service – Mr. Tony Frost – 10.30am
- 12 Men's Club – Meal at The Crown, Willington
- 15 Friends of All Saints – Fynnus Fogg - 70s rock band in the Church – 7.30pm
- 15 Social Club – Karaoke Night from 8.30pm
- 16 Congregational Church Service – Revd. Lionel Albon – 10.30am
- 19 Men's Club – Newmarket Races – The Two Year Old Meeting
- 23 Congregational Church Service – Revd. Nicholas Pneumaticos – 10.30am
- 27 Coffee Morning – Congregational Church – 10.00am-12 noon
- 29 Annual Village Fireworks Display – Playing Fields from 5.00pm
- 29 Social Club – live band after fireworks – “Mice with Glasses” – from 9.00pm
- 30 Congregational Church Service – Revd. Peter Hyde – 10.30am
- 31 Playing Fields Management Committee Meeting – Social Club – 8.00pm

## NOVEMBER

- 1 Parish Council Meeting – Congregational Church – 7.45pm
- 3 All Saints Church, Shillington – All Souls Service – 9.30am
- 6 Congregational Church Service – Mrs. Brenda Ballentine – 10.30am
- 9 Men's Club – Meal at The Whitehart, Flitton
- 10 Wives Group – ‘Oral History of Hitchin British Schools’ with Andy Gibbs – Congr. Church – 2.00-4.00pm
- 12 Friends of All Saints – Sing-along Grease Movie – at Church – 7.00pm arrival.
- 13 Congregational Church Remembrance Sunday Service – Revd. McCormick – 9.45am
- 13 War Memorial Wreath Laying – 10.45am
- 16 Village Hall Management Committee Meeting – Jubilee Room – 7.30pm
- 20 All Saints Church, Shillington – Communion Service with Bishop Richard – 9.30am
- 20 Congregational Church Service – Mr. Tony Frost – 10.30am
- 23 Men's Club – Lunch Social at the IBOS in Hitchin
- 26 Coffee Morning – Congregational Church – 10am to 12.30pm
- 26 Social Club – band night with ‘Black Squirrels’ from 9.00pm
- 27 Congregational Church Service – Mr. Richard Crane – 10.30am

## DECEMBER

- 2 Congregational Church – Xmas Tree Festival – 3.30-5.30pm
- 3 Congregational Church – Xmas Tree Festival – 1.00-5.00pm
- 3 All Saints Church, Shillington – Xmas Fayre – 12 noon to 3.30pm
- 4 Congregational Church Service – Revd. Angus McCormick & Mr. Tony Frost – 10.30am
- 4 Congregational Church – Xmas Tree Festival – 1.00-5.00pm
- 4 Congregational Church – Carol Service with Military Wives Choir from 5.00pm
- 6 Parish Council Meeting – Congregational Church – 7.45pm
- 8 Wives Group – Christmas Outing – to be arranged.

The **PARISH NEWS** is a voluntary community paper produced by **Sally Stapleton** and published by **Lonsdale Print Solutions Limited (01933-233034)** web: [www.lonsdaleps.co.uk](http://www.lonsdaleps.co.uk)

*This magazine is sponsored by Advertisers, Shillington Parish Council, Social Club, All Saints Church, Friends of All Saints and Men's Club*

*Views expressed in the articles and adverts do not necessarily reflect the views or opinions of the Editor or members of the Parish Council.*

[ed4shillingtonnews@btinternet.com](mailto:ed4shillingtonnews@btinternet.com) ☎ 07711-504489 New website currently under construction